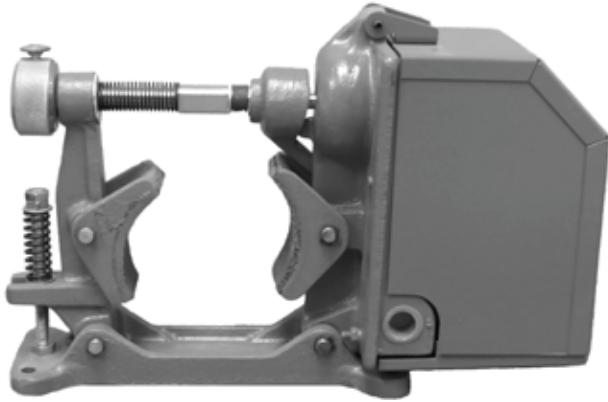


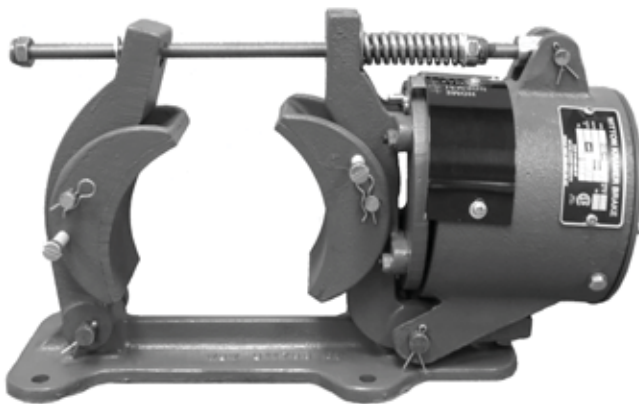
Witton Kramer
Brake

Dings Coupler
Brake



The Perigrip Brake Is A Well Proven Design With a Laminated Steel Magnet System. The Design Incorporates The Following Features:

- High quality cast iron construction
- Brakes fitted with manual release lever as standard
- Self-adjusting spring-loaded shoe
- A welded steel hinged cover protects the complete magnet assembly against dust and damage
- Class B insulation
- CSA approved



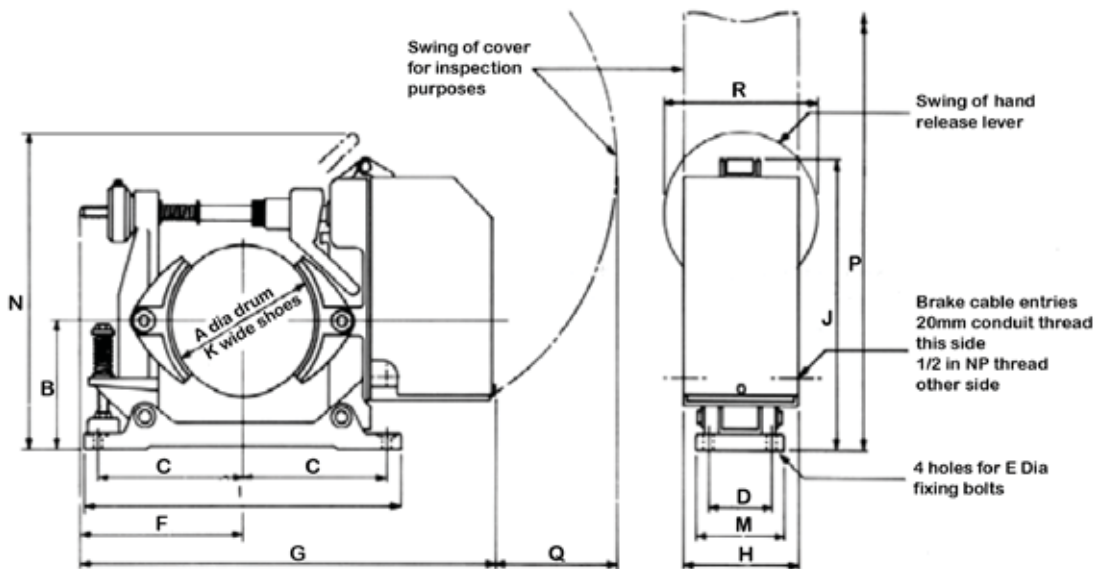
The PM Brake's Long Established and Well Proven Cast Iron Design Has Stainless Steel Pivot Pins And Is Suitable For a Wide Range of Industrial Applications. The Design Incorporates The Following Features:

- Main components are of cast steel, and high quality cast iron
- Spring and all machined steel parts are plated
- Brake fitted with manual release lever as standard
- 8 hour rated in any period of 24 hours
- Friction device prevents brake shoes from dragging on the drum when the brake is off
- Weatherproof construction, with encapsulated magnet coil
- CSA approved

Witton Kramer Brake
Dings Coupler Brake

Size	Voltage	P/N	List	Brake Ft. Lbs	G Dim. (IN.)	LBS
4"	230/460 V	404745	\$2,986	18	14.625	35
	575 V	404713	\$2,986	18	14.625	35
6"	230/460 V	406744	\$4,298	60	19.25	70
	575 V	406713	\$4,298	60	19.25	70
8"	230/460 V	408751	\$5,169	120	22.875	100
	575 V	408713	\$5,169	120	22.875	100
10"	230/460 V	410746	\$6,843	250	28.5	185
	575 V	410703	\$6,843	250	28.5	185
12"	230/460 V	412749	\$9,281	400	32.0	265
	575 V	412709	\$9,281	400	32.0	265

Discount Category **40**



A (dia) Inch	Ret torque lbf ft	B	C	D	E	F	G	H	J	K	L
4	18	4.0	4.5	2.5	0.312	5.25	14.625	4.875	9.375	1.9	10
6	60	5.5	6.125	3.0	0.375	6.5	19.25	6.0	12.625	2.5	13.5
8	120	6.75	8.0	3.5	0.5	8.625	22.875	6.375	15.375	3.25	17.5
10	250	8.5	9.5	4.5	0.5	10.25	28.5	6.5	18.5	4.0	20.5
12	400	10.25	11	5.0	0.625	12.25	32.0	7.0	22.0	2.75	24

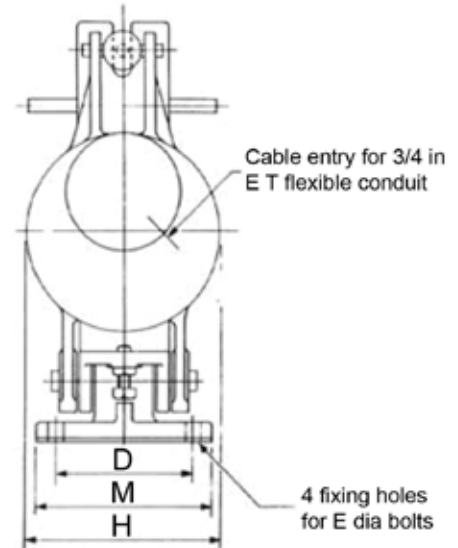
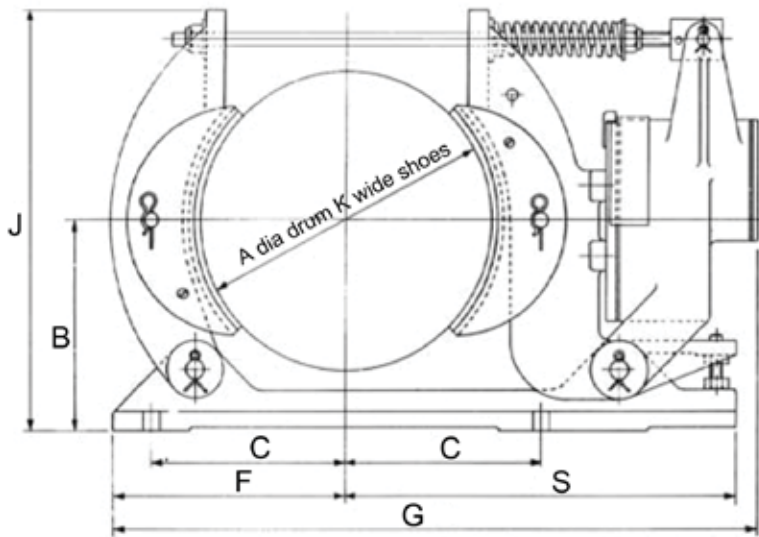
A (dia) Inch	M	N	P	Q	R	T	Gross Mass lb	Consumption VA	Inrush VA
4	3.5	9.625	18.875	5.0	4.75	10	35	170	Approx 10 times
6	4.25	13	24.875	5.25	6.0	13.5	70	270	
8	5.0	16.75	28.125	7.25	8.5	17.5	100	300	
10	6.0	19.5	37.0	9.0	8.5	20.5	185	380	
12	7.0	23.25	43.0	10.5	10	24	265	770	

Witton Kramer Brake

Dings Coupler Brake

Size	Voltage	P/N	List	Brake Ft. Lbs	G Dim. (IN.)	LBS
4"	90 V DC	PM04.1012B.4F2B	\$3,449	22	12.0	25
	230/460 V	PM04.1062S.4F2B	\$3,449	22	12.0	25
	575 V	PM04.1046J.4F2B	\$2,935	22	12.0	25
6"	90 V DC	PM06.2103C.4G2B	\$4,710	60	14.875	56
	230/460 V	PM06.2108M.4G2B	\$4,710	60	14.875	56
	575 V	PM06.2027Q.4G2B	\$4,123	60	14.875	56
8"	90 V DC	PM08.3077C.4G2B	\$5,712	155	19.75	110
	230/460 V	PM08.3083V.4G2B	\$5,712	155	19.75	110
	575 V	PM08.3044G.4G2B	\$5,016	155	19.75	110
10"	90 V DC	PM10.4109C.4G2B	\$7,305	265	23.75	150
	230/460 V	PM10.4108V.4G2B	\$7,305	265	23.75	150
	575 V	PM10.4044G.4G2B	\$6,518	265	23.75	150
12"	90 V DC	PM12.5092C.4G2B	\$9,900	405	28.625	220
	230/460 V	PM12.5096V.4G2B	\$9,900	405	28.625	220
	575 V	PM12.5045G.4G2B	\$8,963	405	28.625	220
15"	90 V DC	PM15.6060C.4O2B	\$17,282	960	33.25	400
	230/460 V	PM15.6087V.4G2B	\$17,282	960	33.25	400
	575 V	PM15.6072G.4D2B	\$15,775	960	33.25	400

Discount Category **41**



A (dia) Inch	Ret torque lbf ft	B	C	D	E	F	G	H	J	K	M	S	Weight lbs	Consumption VA
4	22	3.375	3.0	3.0	0.312	3.75	12.0	3.875	6.0	2.0	4.0	5.75	25	65
6	60	4.75	4.0	4.0	0.375	5.0	14.875	5.5	9.0	3.0	5.0	8.0	56	80
8	155	6.0	5.5	4.5	0.375	6.5	19.75	6.875	11.5	4.0	5.625	12.5	110	150
10	265	7.0	6.5	5.0	0.5	8.0	23.75	7.625	13.5	4.0	7.0	14.125	150	200
12	405	8.75	8.5	6.0	0.625	10.25	28.625	8.125	17.0	5.0	8.0	17.125	220	250
15	960	10.5	10.0	7.0	0.75	12.0	33.25	10.125	21.0	6.0	9.0	22.0	400	350
18	1680	13.0	12.0	9.0	0.75	15.0	39.5	12.125	25.25	8.0	11.5	24.0	660	460
21	2900	15.0	14.0	10.0	0.75	17.5	42.75	15.625	28.25	9.0	13.0	25.5	950	600
24	4800	15.5	15.0	11.0	1.0	17.5	43.0	20.75	30.625	10.0	13.5	28.375	1375	700