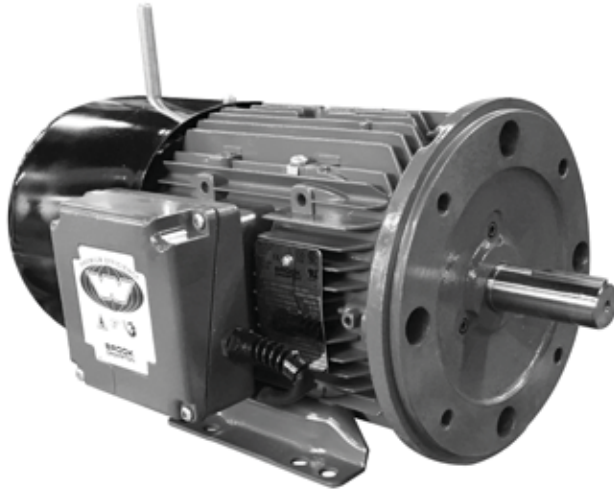
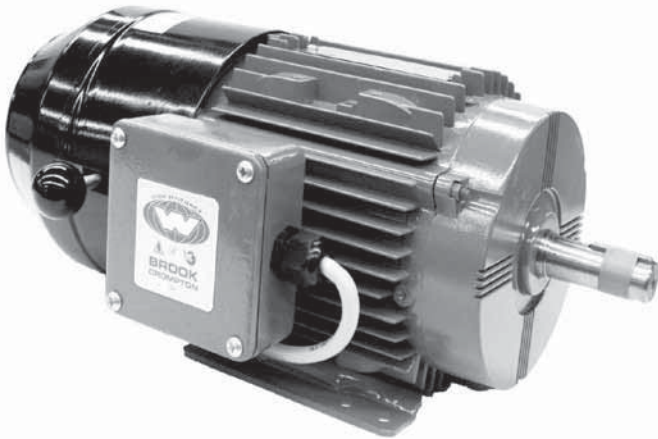


Single Phase
Fractional 56/56C
NEMA Aluminum
NEMA Cast Iron
NEMA Explosion Proof
Close Coupled Pump Motor
NEMA 2-Speed Motor
NEMA Brake Motor



Three Phase Brake Motors With Lightweight High Performance Cast Aluminum Frames. Features Include:

- 1.25 service factor at 60Hz, 1.0 service factor at 50Hz
- Class F insulation with class B rise
- Removable/ repositionable feet for easy conversion to F1, F2, F3 (F0), or round body configuration
- Motor: IP55 degree of protection for washdown duty enclosure
- Full contact shaft seals inside both brackets for increased protection against contaminants
- Brake: IP23 degree of protection
- AC brake mounted to non-drive end of motor
- Brake is spring applied, power release
- Dual rated 60/50Hz at same HP
- Cast Aluminum conduit box with drilled and tapped entry is rotatable in 90 degree increments
- CSA approved for Class I; Division 2; Groups A, B, C & D, Zone 2; Groups IIA & IIB T3 on sine wave power
- Internal tropicproof



Notes:
RF - Removable Feet

W Series Brake Motor NEMA 56-286T - TEFC Foot Mounted - Cast Aluminum



HP	RPM	Frame	Voltage	P/N	List	Brake Ft. Lbs	FL Eff.	C Dim. (IN)	S.F. 60 Hz	FL Amps	LBS	Notes
0.5	1800	56	230/460 V	BF4N.50-2BRK	\$1,599	6	68	15.04	1.25	0.98	23	RF
	1800	56	575 V	BF4N.50-5BRK	\$1,599	6	68	15.04	1.25	0.78	23	RF
	1200	56	230/460 V	BF6N.50-2BRK	\$1,706	6	74	15.04	1.25	0.90	23	RF
	1200	56	575 V	BF6N.50-5BRK	\$1,706	6	74	15.04	1.25	0.72	23	RF
0.75	3600	56	230/460 V	BF2N.75-2BRK	\$1,633	6	75	15.04	1.25	1.15	25	RF
	3600	56	575 V	BF2N.75-5BRK	\$1,633	6	75	15.04	1.25	0.92	25	RF
	1800	56	230/460 V	BF4N.75-2BRK	\$1,611	6	75.5	15.04	1.25	1.28	25	RF
	1800	56	575 V	BF4N.75-5BRK	\$1,611	6	75.5	15.04	1.25	1.02	25	RF
	1200	56	230/460 V	BF6N.75-2BRK	\$1,742	6	72.5	15.04	1.25	1.37	25	RF
	1200	56	575 V	BF6N.75-5BRK	\$1,742	6	72.5	15.04	1.25	1.09	25	RF
1	3600	56	230/460 V	BF2N001-2BRK	\$1,669	6	75	15.04	1.25	1.52	29	RF
	3600	56	575 V	BF2N001-5BRK	\$1,669	6	75	15.04	1.25	1.21	29	RF
	1800	56	230/460 V	BF4N001-2BRK	\$1,626	6	73	15.04	1.25	1.68	29	RF
	1800	56	575 V	BF4N001-5BRK	\$1,626	6	73	15.04	1.25	1.34	29	RF
	1800	143/5T	230/460 V	BA4N001-4BRK	\$2,012	11	85.5	17.68	1.25	1.40	47	RF
	1800	143/5T	575 V	BA4N001-5BRK	\$2,012	11	85.5	17.68	1.25	1.12	47	RF
1.5	3600	56	230/460 V	BF2N1.5-2BRK	\$1,709	6	77	15.04	1.25	2.11	29	RF
	3600	56	575 V	BF2N1.5-5BRK	\$1,709	6	77	15.04	1.25	1.69	29	RF
	1800	56	230/460 V	BF4N1.5-2BRK	\$1,642	6	75	15.04	1.25	2.39	29	RF
	1800	56	575 V	BF4N1.5-5BRK	\$1,642	6	75	15.04	1.25	1.91	29	RF
	3600	143/5T	230/460 V	BA2N1.5-4BRK	\$2,037	11	84	17.68	1.25	1.90	47	RF
	3600	143/5T	575 V	BA2N1.5-5BRK	\$2,037	11	84	17.68	1.25	1.52	47	RF
	1800	143/5T	230/460 V	BA4N1.5-4BRK	\$2,053	11	86.5	17.68	1.25	2.10	49	RF
	1800	143/5T	575 V	BA4N1.5-5BRK	\$2,053	11	86.5	17.68	1.25	1.68	49	RF
2	3600	143/5T	230/460 V	BA2N002-4BRK	\$2,089	27.7	85.5	17.68	1.25	2.60	49	RF
	3600	143/5T	575 V	BA2N002-5BRK	\$2,089	27.7	85.5	17.68	1.25	2.08	49	RF
	1800	143/5T	230/460 V	BA4N002-4BRK	\$2,088	11	86.5	17.68	1.25	2.90	49	RF
	1800	143/5T	575 V	BA4N002-5BRK	\$2,088	11	86.5	17.68	1.25	2.32	49	RF
3	3600	182/4T	230/460 V	BA2N003-4BRK	\$2,588	27.7	86.5	18.93	1.25	3.50	102	RF
	3600	182/4T	575 V	BA2N003-5BRK	\$2,588	27.7	86.5	18.93	1.25	2.80	102	RF
	1800	182/4T	230/460 V	BA4N003-4BRK	\$2,595	27.7	89.5	18.93	1.25	3.90	102	RF
	1800	182/4T	575 V	BA4N003-5BRK	\$2,595	27.7	89.5	18.93	1.25	3.12	102	RF
5	3600	182/4T	230/460 V	BA2N005-4BRK	\$2,657	27.7	88.5	19.77	1.25	5.80	114	RF
	3600	182/4T	575 V	BA2N005-5BRK	\$2,657	27.7	88.5	19.77	1.25	4.64	114	RF
	1800	182/4T	230/460 V	BA4N005-4BRK	\$2,603	27.7	89.5	19.77	1.25	6.50	114	RF
	1800	182/4T	575 V	BA4N005-5BRK	\$2,603	27.7	89.5	19.77	1.25	5.20	114	RF
7.5	3600	213/5T	230/460 V	BA2N7.5-4BRK	\$3,204	59.9	89.5	23.80	1.25	8.40	145	RF
	3600	213/5T	575 V	BA2N7.5-5BRK	\$3,204	59.9	89.5	23.80	1.25	6.72	145	RF
	1800	213/5T	230/460 V	BA4N7.5-4BRK	\$3,251	59.9	91.7	23.80	1.25	9.80	145	RF
	1800	213/5T	575 V	BA4N7.5-5BRK	\$3,251	59.9	91.7	23.80	1.25	7.84	145	RF
10	3600	213/5T	230/460 V	BA2N010-4BRK	\$3,460	59.9	90.2	23.80	1.25	11.60	165	RF
	3600	213/5T	575 V	BA2N010-5BRK	\$3,460	59.9	90.2	23.80	1.25	9.28	165	RF
	1800	213/5T	230/460 V	BA4N010-4BRK	\$3,480	59.9	91.7	23.80	1.25	13.20	165	RF
	1800	213/5T	575 V	BA4N010-5BRK	\$3,480	59.9	91.7	23.80	1.25	10.56	165	RF

Discount Category **15**

230/460V motors supplied with 230V coil. 460V coil is available with “-9BRK” suffix.

254T - 286T frame brake motors available. Contact Brook Crompton for pricing and availability.

Single Phase

Fractional 56/56C

NEMA Aluminum

NEMA Cast Iron

NEMA Explosion Proof

Close Coupled Pump Motor

NEMA 2 Speed Motor

NEMA Brake Motor

**W Series Brake Motor NEMA 56-286T - TEFC
C-Face With Removable Feet - Cast Aluminum**

	HP	RPM	Frame	Voltage	P/N	List	Brake Ft. Lbs	FL Eff.	C Dim. (IN)	S.F. 60 Hz	FL Amps	LBS	Notes
Single Phase	0.5	1800	56C	230/460 V	BF4N.50-2CBRK	\$1,639	6	68	15.04	1.25	0.98	29	RF
		1800	56C	575 V	BF4N.50-5CBRK	\$1,639	6	68	15.04	1.25	0.78	29	RF
		1200	56C	230/460 V	BF6N.50-2CBRK	\$1,746	6	74	15.04	1.25	0.90	29	RF
		1200	56C	575 V	BF6N.50-5CBRK	\$1,746	6	74	15.04	1.25	0.72	29	RF
Fractional 56/56C	0.75	3600	56C	230/460 V	BF2N.75-2CBRK	\$1,673	6	75	15.04	1.25	1.15	31	RF
		3600	56C	575 V	BF2N.75-5CBRK	\$1,673	6	75	15.04	1.25	0.92	31	RF
		1800	56C	230/460 V	BF4N.75-2CBRK	\$1,651	6	75.5	15.04	1.25	1.28	31	RF
		1800	56C	575 V	BF4N.75-5CBRK	\$1,651	6	75.5	15.04	1.25	1.02	31	RF
		1200	56C	230/460 V	BF6N.75-2CBRK	\$1,782	6	72.5	15.04	1.25	1.37	31	RF
		1200	56C	575 V	BF6N.75-5CBRK	\$1,782	6	72.5	15.04	1.25	1.09	31	RF
NEMA Aluminum	1	3600	56C	230/460 V	BF2N001-2CBRK	\$1,709	6	75	15.04	1.25	1.52	33	RF
		3600	56C	575 V	BF2N001-5CBRK	\$1,709	6	75	15.04	1.25	1.21	33	RF
		1800	56C	230/460 V	BF4N001-2CBRK	\$1,666	6	73	15.04	1.25	1.68	33	RF
		1800	56C	575 V	BF4N001-5CBRK	\$1,666	6	73	15.04	1.25	1.34	33	RF
		1800	143/5TC	230/460 V	BA4N001-4CBRK	\$2,057	11	85.5	17.68	1.25	1.40	57	RF
		1800	143/5TC	575 V	BA4N001-5CBRK	\$2,057	11	85.5	17.68	1.25	1.12	57	RF
NEMA Cast Iron	1.5	3600	56C	230/460 V	BF2N1.5-2CBRK	\$1,749	6	77	15.04	1.25	2.11	33	RF
		3600	56C	575 V	BF2N1.5-5CBRK	\$1,749	6	77	15.04	1.25	1.69	33	RF
		1800	56C	230/460 V	BF4N1.5-2CBRK	\$1,682	6	75	15.04	1.25	2.39	33	RF
		1800	56C	575 V	BF4N1.5-5CBRK	\$1,682	6	75	15.04	1.25	1.91	33	RF
		3600	143/5TC	230/460 V	BA2N1.5-4CBRK	\$2,082	11	84	17.68	1.25	1.90	57	RF
		3600	143/5TC	575 V	BA2N1.5-5CBRK	\$2,082	11	84	17.68	1.25	1.52	57	RF
		1800	143/5TC	230/460 V	BA4N1.5-4CBRK	\$2,098	11	86.5	17.68	1.25	2.10	59	RF
		1800	143/5TC	575 V	BA4N1.5-5CBRK	\$2,098	11	86.5	17.68	1.25	1.68	59	RF
NEMA Explosion Proof	2	3600	143/5TC	230/460 V	BA2N002-4CBRK	\$2,134	27.7	85.5	17.68	1.25	2.60	59	RF
		3600	143/5TC	575 V	BA2N002-5CBRK	\$2,134	27.7	85.5	17.68	1.25	2.08	59	RF
		1800	143/5TC	230/460 V	BA4N002-4CBRK	\$2,133	11	86.5	17.68	1.25	2.90	59	RF
		1800	143/5TC	575 V	BA4N002-5CBRK	\$2,133	11	86.5	17.68	1.25	2.32	59	RF
Close Coupled Pump Motor	3	3600	182/4TC	230/460 V	BA2N003-4CBRK	\$2,653	27.7	86.5	18.93	1.25	3.50	112	RF
		3600	182/4TC	575 V	BA2N003-5CBRK	\$2,653	27.7	86.5	18.93	1.25	2.80	112	RF
		1800	182/4TC	230/460 V	BA4N003-4CBRK	\$2,660	27.7	89.5	18.93	1.25	3.90	112	RF
		1800	182/4TC	575 V	BA4N003-5CBRK	\$2,660	27.7	89.5	18.93	1.25	3.12	112	RF
NEMA 2 Speed Motor	5	3600	182/4TC	230/460 V	BA2N005-4CBRK	\$2,722	27.7	88.5	19.77	1.25	5.80	124	RF
		3600	182/4TC	575 V	BA2N005-5CBRK	\$2,722	27.7	88.5	19.77	1.25	4.64	124	RF
		1800	182/4TC	230/460 V	BA4N005-4CBRK	\$2,668	27.7	89.5	19.77	1.25	6.50	124	RF
		1800	182/4TC	575 V	BA4N005-5CBRK	\$2,668	27.7	89.5	19.77	1.25	5.20	124	RF
NEMA Brake Motor	7.5	3600	213/5TC	230/460 V	BA2N7.5-4CBRK	\$3,304	59.9	89.5	23.80	1.25	8.40	157	RF
		3600	213/5TC	575 V	BA2N7.5-5CBRK	\$3,304	59.9	89.5	23.80	1.25	6.72	157	RF
		1800	213/5TC	230/460 V	BA4N7.5-4CBRK	\$3,351	59.9	91.7	23.80	1.25	9.80	157	RF
		1800	213/5TC	575 V	BA4N7.5-5CBRK	\$3,351	59.9	91.7	23.80	1.25	7.84	157	RF
NEMA Brake Motor	10	3600	213/5TC	230 V	BA2N010-4CBRK	\$3,560	59.9	90.2	23.80	1.25	11.60	177	RF
		3600	213/5TC	575 V	BA2N010-5CBRK	\$3,560	59.9	90.2	23.80	1.25	9.28	177	RF
		1800	213/5TC	230 V	BA4N010-4CBRK	\$3,580	59.9	91.7	23.80	1.25	13.20	177	RF
		1800	213/5TC	575 V	BA4N010-5CBRK	\$3,580	59.9	91.7	23.80	1.25	10.56	177	RF

Discount Category **15**

230/460V motors supplied with 230V coil. 460V coil is available with “-9BRK” suffix.

D-Flange mounted motors also available at same price as C-Face mounted motors.
Change from “CBRK” to “DBRK” at end of part number.

254T - 286T frame brake motors available. Contact Brook Crompton for pricing and availability.



IEC/Metric
Aluminum

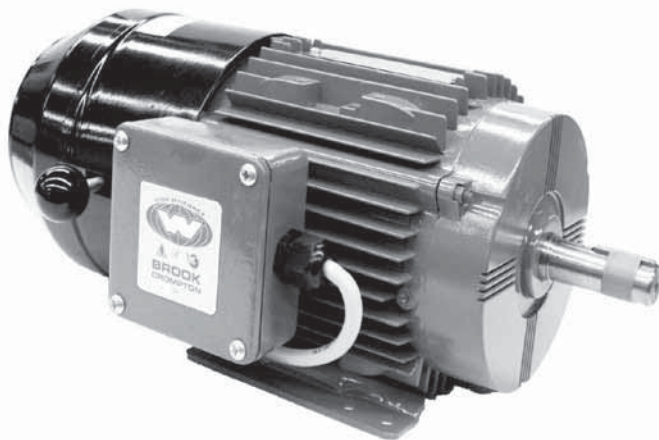
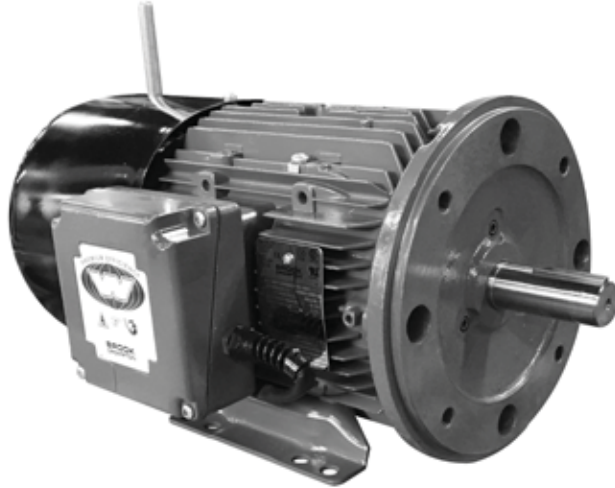
IEC/Metric
Cast Iron

ATEX EEXD IIB
Explosion Proof

ATEX EEXDE IIC
Explosion Proof

ATEX EEXNA
Non-Sparking

IEC/Metric
Brake Motor



Three Phase Brake Motors With Lightweight High Performance Cast Aluminum Frames. Features Include:

- 1.25 service factor at 60Hz, 1.0 service factor at 50Hz
- Class F insulation with class B temperature rise
- Removable/ repositionable feet for easy conversion to F1, F2, F3 (F0), or round body configuration
- Motor: IP55 degree of protection for washdown duty enclosure
- Full contact shaft seals inside both brackets for increased protection against contaminants
- Brake: IP23 degree of protection
- Dual rated 60/50Hz at same HP
- Cast aluminum conduit box with drilled and tapped entry is rotatable in 90 degree increments
- CSA approved for Class I; Division 2; Groups A, B, C & D, Zone 2; Groups IIA & IIB T3 on sine wave power
- Internal tropicproof

Notes:

RF - Removable Feet

EU - Euronorm Dimensions

W Series Brake Motors IEC 71-180L - TEFC B3 (Foot Mount) - Cast Aluminum



HP	Kw	RPM	Frame	Voltage	P/N	List	Brake Ft. Lbs	FL Eff.	L Dim. (mm)	S.F. 60 Hz	FL Amps	LBS	Notes
0.50	0.37	1800	71	230/460 V	BA4M.50-4BRK	\$1,252	1.8	73	295	1.25	1.00	21	RF, EU
		1800	71	575 V	BA4M.50-5BRK	\$1,252	1.8	73	295	1.25	0.80	21	RF, EU
		1200	80	230/460 V	BA6M.50-4BRK	\$1,643	6	65	335	1.25	1.10	27	RF, EU
		1200	80	575 V	BA6M.50-5BRK	\$1,643	6	65	335	1.25	0.90	27	RF, EU
0.75	0.55	3600	71	230/460 V	BA2M.75-4BRK	\$1,248	1.8	74	295	1.25	1.20	23	RF, EU
		3600	71	575 V	BA2M.75-5BRK	\$1,248	1.8	74	295	1.25	1.00	23	RF, EU
		1800	80	230/460 V	BA4M.75-4BRK	\$1,640	6	77	335	1.25	1.40	29	RF, EU
		1800	80	575 V	BA4M.75-5BRK	\$1,640	6	77	335	1.25	1.10	29	RF, EU
		1200	80	230/460 V	BA6M.75-4BRK	\$1,672	6	71	335	1.25	1.50	33	RF, EU
		1200	80	575 V	BA6M.75-5BRK	\$1,672	6	71	335	1.25	1.20	33	RF, EU
1	0.75	3600	80	230/460 V	BA2M001-4BRK	\$1,697	6	78	335	1.25	1.60	33	RF, EU
		3600	80	575 V	BA2M001-5BRK	\$1,697	6	78	335	1.25	1.30	33	RF, EU
		1800	80	230/460 V	BA4M001-4BRK	\$1,701	6	77	335	1.25	1.80	33	RF, EU
		1800	80	575 V	BA4M001-5BRK	\$1,701	6	77	335	1.25	1.40	33	RF, EU
1.5	1.1	3600	80	230/460 V	BA2M1.5-4BRK	\$1,753	6	79	335	1.25	2.30	33	RF, EU
		3600	80	575 V	BA2M1.5-5BRK	\$1,753	6	79	335	1.25	1.80	33	RF, EU
		1800	90S/L	230/460 V	BA4M1.5-4BRK	\$2,099	11	86.5	454	1.25	2.10	49	RF, EU
		1800	90S/L	575 V	BA4M1.5-5BRK	\$2,099	11	86.5	454	1.25	1.60	49	RF, EU
2	1.5	3600	90S/L	230/460 V	BA2M002-4BRK	\$2,118	11	85.5	454	1.25	2.60	49	RF, EU
		3600	90S/L	575 V	BA2M002-5BRK	\$2,118	11	85.5	454	1.25	2.00	49	RF, EU
		1800	90S/L	230/460 V	BA4M002-4BRK	\$2,174	11	86.5	454	1.25	2.90	53	RF, EU
		1800	90S/L	575 V	BA4M002-5BRK	\$2,174	11	86.5	454	1.25	2.30	53	RF, EU
3	2.2	3600	90S/L	230/460 V	BA2M003-4BRK	\$2,192	11	86.5	454	1.25	3.50	49	RF, EU
		3600	90S/L	575 V	BA2M003-5BRK	\$2,192	11	86.5	454	1.25	2.80	49	RF, EU
		1800	100L	230/460 V	BA4M003-4BRK	\$2,448	27.7	89.5	499	1.25	3.90	97	RF, EU
		1800	100L	575 V	BA4M003-5BRK	\$2,448	27.7	89.5	499	1.25	3.10	97	RF, EU
4	3	3600	100L	230/460 V	BA2M004-4BRK	\$2,511	27.7	88.5	499	1.25	4.90	97	RF, EU
		3600	100L	575 V	BA2M004-5BRK	\$2,511	27.7	88.5	499	1.25	3.90	97	RF, EU
		1800	100L	230/460 V	BA4M004-4BRK	\$2,520	27.7	89.5	499	1.25	5.50	97	RF, EU
		1800	100L	575 V	BA4M004-5BRK	\$2,520	27.7	89.5	499	1.25	4.40	97	RF, EU
5.5	4	3600	112M	230/460 V	BA2M5.5-4BRK	\$2,840	27.7	88.5	532	1.25	5.90	112	RF, EU
		3600	112M	575 V	BA2M5.5-5BRK	\$2,840	27.7	88.5	532	1.25	4.70	112	RF, EU
		1800	112M	230/460 V	BA4M5.5-4BRK	\$2,832	27.7	89.5	532	1.25	6.20	112	RF, EU
		1800	112M	575 V	BA4M5.5-5BRK	\$2,832	27.7	89.5	532	1.25	5.00	112	RF, EU
7.5	5.5	3600	132S/M	230/460 V	BA2M7.5-4BRK	\$3,448	59.9	89.5	600	1.25	8.40	145	RF, EU
		3600	132S/M	575 V	BA2M7.5-5BRK	\$3,448	59.9	89.5	600	1.25	6.70	145	RF, EU
		1800	132S/M	230/460 V	BA4M7.5-4BRK	\$3,548	59.9	91.7	600	1.25	9.80	145	RF, EU
		1800	132S/M	575 V	BA4M7.5-5BRK	\$3,548	59.9	91.7	600	1.25	7.80	145	RF, EU
10	7.5	3600	132S/M	230/460 V	BA2M010-4BRK	\$3,566	59.9	90.2	600	1.25	11.60	145	RF, EU
		3600	132S/M	575 V	BA2M010-5BRK	\$3,566	59.9	90.2	600	1.25	9.20	145	RF, EU
		1800	132S/M	230/460 V	BA4M010-4BRK	\$3,894	59.9	91.7	600	1.25	13.20	165	RF, EU
		1800	132S/M	575 V	BA4M010-5BRK	\$3,894	59.9	91.7	600	1.25	10.50	165	RF, EU

IEC/Metric
Aluminum

IEC/Metric
Cast Iron

ATEX EXXD IIB
Explosion Proof

ATEX EXXDE IIC
Explosion Proof

ATEX EXXNA
Non-Sparking

IEC/Metric
Brake Motor

Discount Category **15**

230/460V motors supplied with 230V coil. 460V coil is available with "-9BRK" suffix.

**W Series Brake Motors IEC 71-180L - TEFC
B14 (C-Face With B3 Removable Feet) - Cast Aluminum**

	HP	Kw	RPM	Frame	Voltage	P/N	List	Brake Ft. Lbs	FL Eff.	L Dim. (mm)	S.F. 60 Hz	FL Amps	LBS	Notes
IEC/Metric Aluminum	0.50	0.37	1800	71	230/460 V	BA4M.50-4CBRK	\$1,292	1.8	73	295	1.25	1.00	25	RF, EU
			1800	71	575 V	BA4M.50-5CBRK	\$1,292	1.8	73	295	1.25	0.80	25	RF, EU
			1200	80	230/460 V	BA6M.50-4CBRK	\$1,688	6	65	335	1.25	1.10	31	RF, EU
			1200	80	575 V	BA6M.50-5CBRK	\$1,688	6	65	335	1.25	0.90	31	RF, EU
IEC/Metric Cast Iron	0.75	0.55	3600	71	230/460 V	BA2M.75-4CBRK	\$1,293	1.8	74	295	1.25	1.20	25	RF, EU
			3600	71	575 V	BA2M.75-5CBRK	\$1,293	1.8	74	295	1.25	1.00	25	RF, EU
			1800	80	230/460 V	BA4M.75-4CBRK	\$1,685	6	77	335	1.25	1.40	33	RF, EU
			1800	80	575 V	BA4M.75-5CBRK	\$1,685	6	77	335	1.25	1.10	33	RF, EU
			1200	80	230/460 V	BA6M.75-4CBRK	\$1,717	6	71	335	1.25	1.50	33	RF, EU
			1200	80	575 V	BA6M.75-5CBRK	\$1,717	6	71	335	1.25	1.20	33	RF, EU
ATEX EEXD IIB Explosion Proof	1	0.75	3600	80	230/460 V	BA2M001-4CBRK	\$1,742	6	78	335	1.25	1.60	37	RF, EU
			3600	80	575 V	BA2M001-5CBRK	\$1,742	6	78	335	1.25	1.30	37	RF, EU
			1800	80	230/460 V	BA4M001-4CBRK	\$1,746	6	77	335	1.25	1.80	37	RF, EU
			1800	80	575 V	BA4M001-5CBRK	\$1,746	6	77	335	1.25	1.40	37	RF, EU
ATEX EEXDE IIC Explosion Proof	1.5	1.1	3600	80	230/460 V	BA2M1.5-4CBRK	\$1,803	6	79	335	1.25	2.30	37	RF, EU
			3600	80	575 V	BA2M1.5-5CBRK	\$1,803	6	79	335	1.25	1.80	37	RF, EU
			1800	90S/L	230/460 V	BA4M1.5-4CBRK	\$2,149	11	86.5	454	1.25	2.10	53	RF, EU
			1800	90S/L	575 V	BA4M1.5-5CBRK	\$2,149	11	86.5	454	1.25	1.60	53	RF, EU
ATEX EEXNA Non-Sparking	2	1.5	3600	90S/L	230/460 V	BA2M002-4CBRK	\$2,168	11	85.5	454	1.25	2.60	53	RF, EU
			3600	90S/L	575 V	BA2M002-5CBRK	\$2,168	11	85.5	454	1.25	2.00	53	RF, EU
			1800	90S/L	230/460 V	BA4M002-4CBRK	\$2,224	11	86.5	454	1.25	2.90	57	RF, EU
			1800	90S/L	575 V	BA4M002-5CBRK	\$2,224	11	86.5	454	1.25	2.30	57	RF, EU
ATEX EEXNA Non-Sparking	3	2.2	3600	90S/L	230/460 V	BA2M003-4CBRK	\$2,242	11	86.5	454	1.25	3.50	53	RF, EU
			3600	90S/L	575 V	BA2M003-5CBRK	\$2,242	11	86.5	454	1.25	2.80	53	RF, EU
			1800	100L	230/460 V	BA4M003-4CBRK	\$2,518	27.7	89.5	499	1.25	3.90	104	RF, EU
			1800	100L	575 V	BA4M003-5CBRK	\$2,518	27.7	89.5	499	1.25	3.10	104	RF, EU
IEC/Metric Brake Motor	4	3	3600	100L	230/460 V	BA2M004-4CBRK	\$2,581	27.7	88.5	499	1.25	4.90	72	RF, EU
			3600	100L	575 V	BA2M004-5CBRK	\$2,581	27.7	88.5	499	1.25	3.90	72	RF, EU
			1800	100L	230/460 V	BA4M004-4CBRK	\$2,590	27.7	89.5	499	1.25	5.50	72	RF, EU
			1800	100L	575 V	BA4M004-5CBRK	\$2,590	27.7	89.5	499	1.25	4.40	72	RF, EU
IEC/Metric Brake Motor	5.5	4	3600	112M	230/460 V	BA2M5.5-4CBRK	\$2,920	27.7	88.5	532	1.25	5.90	88	RF, EU
			3600	112M	575 V	BA2M5.5-5CBRK	\$2,920	27.7	88.5	532	1.25	4.70	88	RF, EU
			1800	112M	230/460 V	BA4M5.5-4CBRK	\$2,912	27.7	89.5	532	1.25	6.20	88	RF, EU
			1800	112M	575 V	BA4M5.5-5CBRK	\$2,912	27.7	89.5	532	1.25	5.00	88	RF, EU
IEC/Metric Brake Motor	7.5	5.5	3600	132S/M	230/460 V	BA2M7.5-4CBRK	\$3,573	59.9	89.5	600	1.25	8.40	125	RF, EU
			3600	132S/M	575 V	BA2M7.5-5CBRK	\$3,573	59.9	89.5	600	1.25	6.70	125	RF, EU
			1800	132S/M	230/460 V	BA4M7.5-4CBRK	\$3,673	59.9	91.7	600	1.25	9.80	125	RF, EU
			1800	132S/M	575 V	BA4M7.5-5CBRK	\$3,673	59.9	91.7	600	1.25	7.80	125	RF, EU
IEC/Metric Brake Motor	10	7.5	3600	132S/M	230/460 V	BA2M010-4CBRK	\$3,691	59.9	90.2	600	1.25	11.60	125	RF, EU
			3600	132S/M	575 V	BA2M010-5CBRK	\$3,691	59.9	90.2	600	1.25	9.20	125	RF, EU
			1800	132S/M	230/460 V	BA4M010-4CBRK	\$4,019	59.9	91.7	600	1.25	13.20	138	RF, EU
			1800	132S/M	575 V	BA4M010-5CBRK	\$4,019	59.9	91.7	600	1.25	10.50	138	RF, EU

Discount Category **15**

230/460V motors supplied with 230V coil. 460V coil is available with "-9BRK" suffix.

**W Series Brake Motors IEC 71-180L - TEFC
B5 (D-Flange With B3 Removable Feet) - Cast Aluminum**



HP	Kw	RPM	Frame	Voltage	P/N	List	Brake Ft. Lbs	FL Eff.	L Dim. (mm)	S.F. 60 Hz	FL Amps	LBS	Notes
0.50	0.37	1800	71	230/460 V	BA4M.50-4DBRK	\$1,292	1.8	73	295	1.25	1.00	25	RF, EU
		1800	71	575 V	BA4M.50-5DBRK	\$1,292	1.8	73	295	1.25	0.80	25	RF, EU
		1200	80	230/460 V	BA6M.50-4DBRK	\$1,688	6	65	335	1.25	1.10	31	RF, EU
		1200	80	575 V	BA6M.50-5DBRK	\$1,688	6	65	335	1.25	0.90	31	RF, EU
0.75	0.55	3600	71	230/460 V	BA2M.75-4DBRK	\$1,293	1.8	74	295	1.25	1.20	25	RF, EU
		3600	71	575 V	BA2M.75-5DBRK	\$1,293	1.8	74	295	1.25	1.00	25	RF, EU
		1800	80	230/460 V	BA4M.75-4DBRK	\$1,685	6	77	335	1.25	1.40	33	RF, EU
		1800	80	575 V	BA4M.75-5DBRK	\$1,685	6	77	335	1.25	1.10	33	RF, EU
		1200	80	230/460 V	BA6M.75-4DBRK	\$1,717	6	71	335	1.25	1.50	33	RF, EU
		1200	80	575 V	BA6M.75-5DBRK	\$1,717	6	71	335	1.25	1.20	33	RF, EU
1	0.75	3600	80	230/460 V	BA2M001-4DBRK	\$1,742	6	78	335	1.25	1.60	37	RF, EU
		3600	80	575 V	BA2M001-5DBRK	\$1,742	6	78	335	1.25	1.30	37	RF, EU
		1800	80	230/460 V	BA4M001-4DBRK	\$1,746	6	77	335	1.25	1.80	37	RF, EU
		1800	80	575 V	BA4M001-5DBRK	\$1,746	6	77	335	1.25	1.40	37	RF, EU
1.5	1.1	3600	80	230/460 V	BA2M1.5-4DBRK	\$1,803	6	79	335	1.25	2.30	37	RF, EU
		3600	80	575 V	BA2M1.5-5DBRK	\$1,803	6	79	335	1.25	1.80	37	RF, EU
		1800	90S/L	230/460 V	BA4M1.5-4DBRK	\$2,149	11	86.5	454	1.25	2.10	53	RF, EU
		1800	90S/L	575 V	BA4M1.5-5DBRK	\$2,149	11	86.5	454	1.25	1.60	53	RF, EU
2	1.5	3600	90S/L	230/460 V	BA2M002-4DBRK	\$2,168	11	85.5	454	1.25	2.60	53	RF, EU
		3600	90S/L	575 V	BA2M002-5DBRK	\$2,168	11	85.5	454	1.25	2.00	53	RF, EU
		1800	90S/L	230/460 V	BA4M002-4DBRK	\$2,224	11	86.5	454	1.25	2.90	57	RF, EU
		1800	90S/L	575 V	BA4M002-5DBRK	\$2,224	11	86.5	454	1.25	2.30	57	RF, EU
3	2.2	3600	90S/L	230/460 V	BA2M003-4DBRK	\$2,242	11	86.5	454	1.25	3.50	53	RF, EU
		3600	90S/L	575 V	BA2M003-5DBRK	\$2,242	11	86.5	454	1.25	2.80	53	RF, EU
		1800	100L	230/460 V	BA4M003-4DBRK	\$2,518	27.7	89.5	499	1.25	3.90	104	RF, EU
		1800	100L	575 V	BA4M003-5DBRK	\$2,518	27.7	89.5	499	1.25	3.10	104	RF, EU
4	3	3600	100L	230/460 V	BA2M004-4DBRK	\$2,581	27.7	88.5	499	1.25	4.90	72	RF, EU
		3600	100L	575 V	BA2M004-5DBRK	\$2,581	27.7	88.5	499	1.25	3.90	72	RF, EU
		1800	100L	230/460 V	BA4M004-4DBRK	\$2,590	27.7	89.5	499	1.25	5.50	72	RF, EU
		1800	100L	575 V	BA4M004-5DBRK	\$2,590	27.7	89.5	499	1.25	4.40	72	RF, EU
5.5	4	3600	112M	230/460 V	BA2M5.5-4DBRK	\$2,920	27.7	88.5	532	1.25	5.90	88	RF, EU
		3600	112M	575 V	BA2M5.5-5DBRK	\$2,920	27.7	88.5	532	1.25	4.70	88	RF, EU
		1800	112M	230/460 V	BA4M5.5-4DBRK	\$2,912	27.7	89.5	532	1.25	6.20	88	RF, EU
		1800	112M	575 V	BA4M5.5-5DBRK	\$2,912	27.7	89.5	532	1.25	5.00	88	RF, EU
7.5	5.5	3600	132S/M	230/460 V	BA2M7.5-4DBRK	\$3,573	59.9	89.5	600	1.25	8.40	125	RF, EU
		3600	132S/M	575 V	BA2M7.5-5DBRK	\$3,573	59.9	89.5	600	1.25	6.70	125	RF, EU
		1800	132S/M	230/460 V	BA4M7.5-4DBRK	\$3,673	59.9	91.7	600	1.25	9.80	125	RF, EU
		1800	132S/M	575 V	BA4M7.5-5DBRK	\$3,673	59.9	91.7	600	1.25	7.80	125	RF, EU
10	7.5	3600	132S/M	230/460 V	BA2M010-4DBRK	\$3,691	59.9	90.2	600	1.25	11.60	125	RF, EU
		3600	132S/M	575 V	BA2M010-5DBRK	\$3,691	59.9	90.2	600	1.25	9.20	125	RF, EU
		1800	132S/M	230/460 V	BA4M010-4DBRK	\$4,019	59.9	91.7	600	1.25	13.20	138	RF, EU
		1800	132S/M	575 V	BA4M010-5DBRK	\$4,019	59.9	91.7	600	1.25	10.50	138	RF, EU

Discount Category **15**

230/460V motors supplied with 230V coil. 460V coil is available with “-9BRK” suffix.

IEC/Metric
Aluminum

IEC/Metric
Cast Iron

ATEX EEXD IIB
Explosion Proof

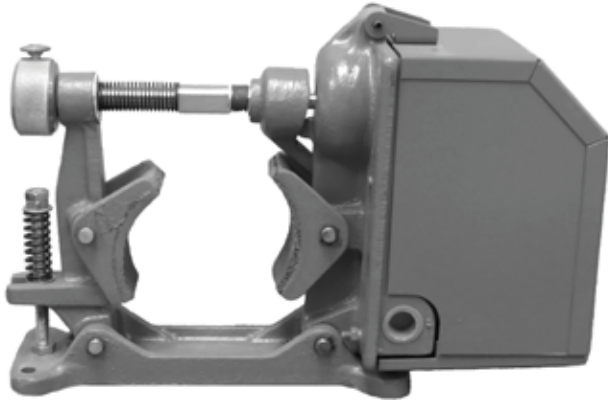
ATEX EEXDE IIC
Explosion Proof

ATEX EEXNA
Non-Sparking

IEC/Metric
Brake Motor

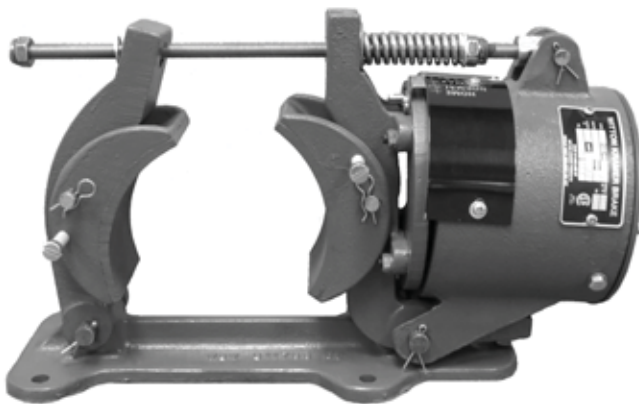
Witton Kramer
Brake

Dings Coupler
Brake



The Perigrip Brake Is A Well Proven Design With a Laminated Steel Magnet System. The Design Incorporates The Following Features:

- High quality cast iron construction
- Brakes fitted with manual release lever as standard
- Self-adjusting spring-loaded shoe
- A welded steel hinged cover protects the complete magnet assembly against dust and damage
- Class B insulation
- CSA approved

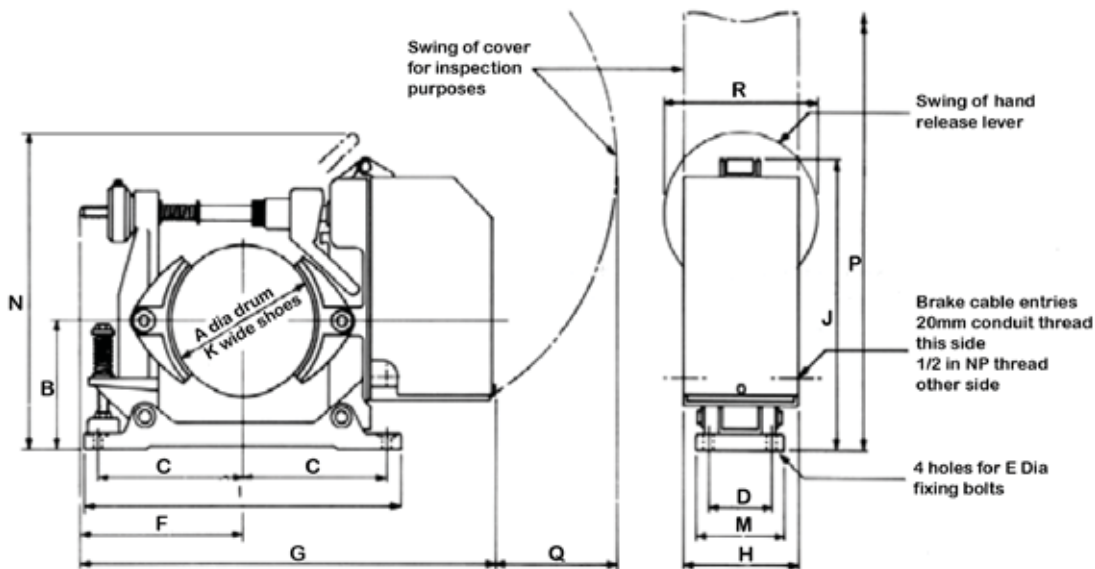


The PM Brake's Long Established and Well Proven Cast Iron Design Has Stainless Steel Pivot Pins And Is Suitable For a Wide Range of Industrial Applications. The Design Incorporates The Following Features:

- Main components are of cast steel, and high quality cast iron
- Spring and all machined steel parts are plated
- Brake fitted with manual release lever as standard
- 8 hour rated in any period of 24 hours
- Friction device prevents brake shoes from dragging on the drum when the brake is off
- Weatherproof construction, with encapsulated magnet coil
- CSA approved

Size	Voltage	P/N	List	Brake Ft. Lbs	G Dim. (IN.)	LBS
4"	230/460 V	404745	\$2,986	18	14.625	35
	575 V	404713	\$2,986	18	14.625	35
6"	230/460 V	406744	\$4,298	60	19.25	70
	575 V	406713	\$4,298	60	19.25	70
8"	230/460 V	408751	\$5,169	120	22.875	100
	575 V	408713	\$5,169	120	22.875	100
10"	230/460 V	410746	\$6,843	250	28.5	185
	575 V	410703	\$6,843	250	28.5	185
12"	230/460 V	412749	\$9,281	400	32.0	265
	575 V	412709	\$9,281	400	32.0	265

Discount Category **40**



A (dia) Inch	Ret torque lbf ft	B	C	D	E	F	G	H	J	K	L
4	18	4.0	4.5	2.5	0.312	5.25	14.625	4.875	9.375	1.9	10
6	60	5.5	6.125	3.0	0.375	6.5	19.25	6.0	12.625	2.5	13.5
8	120	6.75	8.0	3.5	0.5	8.625	22.875	6.375	15.375	3.25	17.5
10	250	8.5	9.5	4.5	0.5	10.25	28.5	6.5	18.5	4.0	20.5
12	400	10.25	11	5.0	0.625	12.25	32.0	7.0	22.0	2.75	24

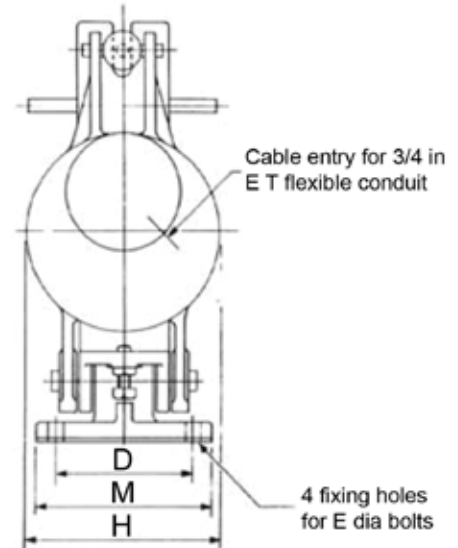
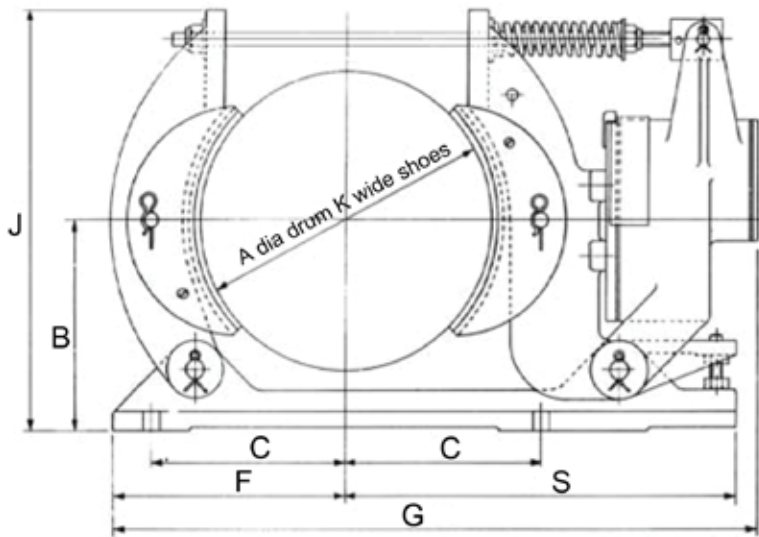
A (dia) Inch	M	N	P	Q	R	T	Gross Mass lb	Consumption VA	Inrush VA
4	3.5	9.625	18.875	5.0	4.75	10	35	170	Approx 10 times
6	4.25	13	24.875	5.25	6.0	13.5	70	270	
8	5.0	16.75	28.125	7.25	8.5	17.5	100	300	
10	6.0	19.5	37.0	9.0	8.5	20.5	185	380	
12	7.0	23.25	43.0	10.5	10	24	265	770	

Witton Kramer Brake

Dings Coupler Brake

Size	Voltage	P/N	List	Brake Ft. Lbs	G Dim. (IN.)	LBS
4"	90 V DC	PM04.1012B.4F2B	\$3,449	22	12.0	25
	230/460 V	PM04.1062S.4F2B	\$3,449	22	12.0	25
	575 V	PM04.1046J.4F2B	\$2,935	22	12.0	25
6"	90 V DC	PM06.2103C.4G2B	\$4,710	60	14.875	56
	230/460 V	PM06.2108M.4G2B	\$4,710	60	14.875	56
	575 V	PM06.2027Q.4G2B	\$4,123	60	14.875	56
8"	90 V DC	PM08.3077C.4G2B	\$5,712	155	19.75	110
	230/460 V	PM08.3083V.4G2B	\$5,712	155	19.75	110
	575 V	PM08.3044G.4G2B	\$5,016	155	19.75	110
10"	90 V DC	PM10.4109C.4G2B	\$7,305	265	23.75	150
	230/460 V	PM10.4108V.4G2B	\$7,305	265	23.75	150
	575 V	PM10.4044G.4G2B	\$6,518	265	23.75	150
12"	90 V DC	PM12.5092C.4G2B	\$9,900	405	28.625	220
	230/460 V	PM12.5096V.4G2B	\$9,900	405	28.625	220
	575 V	PM12.5045G.4G2B	\$8,963	405	28.625	220
15"	90 V DC	PM15.6060C.4O2B	\$17,282	960	33.25	400
	230/460 V	PM15.6087V.4G2B	\$17,282	960	33.25	400
	575 V	PM15.6072G.4D2B	\$15,775	960	33.25	400

Discount Category **41**



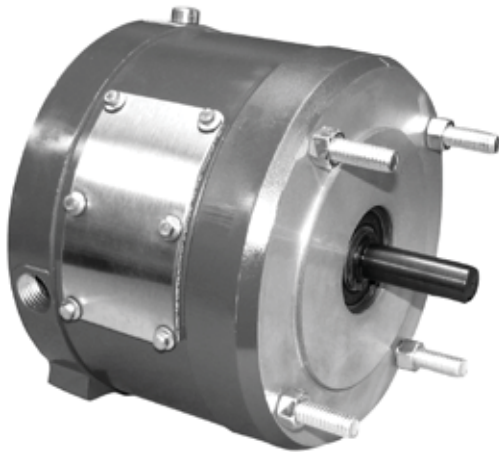
A (dia) Inch	Ret torque lbf ft	B	C	D	E	F	G	H	J	K	M	S	Weight lbs	Consumption VA
4	22	3.375	3.0	3.0	0.312	3.75	12.0	3.875	6.0	2.0	4.0	5.75	25	65
6	60	4.75	4.0	4.0	0.375	5.0	14.875	5.5	9.0	3.0	5.0	8.0	56	80
8	155	6.0	5.5	4.5	0.375	6.5	19.75	6.875	11.5	4.0	5.625	12.5	110	150
10	265	7.0	6.5	5.0	0.5	8.0	23.75	7.625	13.5	4.0	7.0	14.125	150	200
12	405	8.75	8.5	6.0	0.625	10.25	28.625	8.125	17.0	5.0	8.0	17.125	220	250
15	960	10.5	10.0	7.0	0.75	12.0	33.25	10.125	21.0	6.0	9.0	22.0	400	350
18	1680	13.0	12.0	9.0	0.75	15.0	39.5	12.125	25.25	8.0	11.5	24.0	660	460
21	2900	15.0	14.0	10.0	0.75	17.5	42.75	15.625	28.25	9.0	13.0	25.5	950	600
24	4800	15.5	15.0	11.0	1.0	17.5	43.0	20.75	30.625	10.0	13.5	28.375	1375	700

Dings *DYNAMICS GROUP*
co.

Witton Kramer
Brake

Dings Coupler
Brake

60 Series Double C Face
NEMA Frame Sizes 56C, 143TC, 145TC
Torque Ratings: 3 to 15 lb-ft



Specifications:

- Waterproof/dust-tight enclosure - NEMA 4, CSA 4, IP56
- Exterior paint: gray enamel
- Nameplate: Stainless Steel
- Reaction Time: 15-20 milliseconds (release and set)
- AK: 4.5" register / AJ: 5.88" bolt circle
- Thermal capacity: 6 HPS/MIN
- Maximum RPM: 3600
- CSA file #LR13814
- Coil insulation: Class B : 3, 10 & 15 lb-ft brakes

70 Series Double C Face
NEMA Frame Sizes 182TC through 215TC/UC
Torque Ratings: 15 to 50 lb-ft



Specifications:

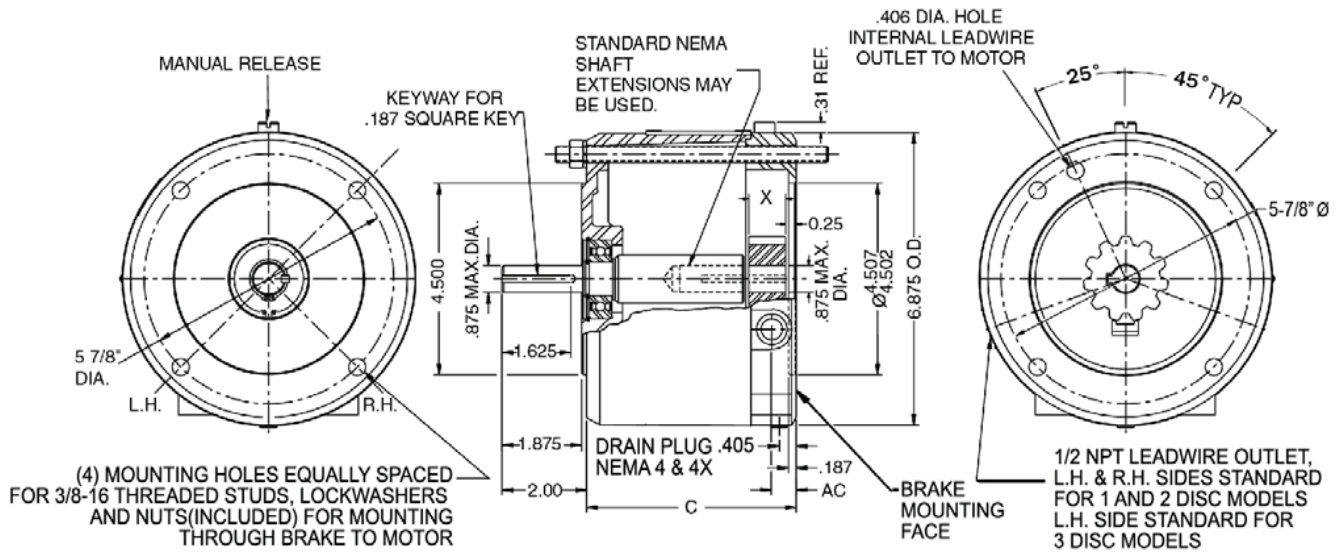
- Waterproof/dust-tight enclosure - NEMA 4, CSA 4, IP56
- Construction: cast iron bracket, aluminum housing
- Exterior paint: red primer
- Nameplate: stainless steel
- Reaction time: 20-25 milliseconds (release and set)
- AK: 8.5" register / AJ: 7.25" bolt circle
- Maximum RPM: 3600
- CSA file #LR13814
- Coil insulation: class H standard

Witton Kramer
Brake

Dings Coupler
Brake

60 Series Double C-Face - NEMA Frame Sizes 56C, 143TC, 145TC									
Typical Hp	Brake Torque lb-ft	Voltage	Part No.	Inertia Wk2 lb-ft ²	Dimensions in inches			Wt. Lbs.	List Price
					C	X	AC		
1	3	115/208-230 V	BC6103-53-1	0.006	4.94	0.88	0.59	11	\$805
		208-230/460 V	BC6103-53-2	0.006	4.94	0.88	0.59	11	\$805
		575 V	BC6103-53-5	0.006	4.94	0.88	0.59	11	\$805
1	6	115/208-230 V	BC6106-53-1	0.006	4.94	0.88	0.59	12	\$885
		208-230/460 V	BC6106-53-2	0.006	4.94	0.88	0.59	12	\$885
		575 V	BC6106-53-5	0.006	4.94	0.88	0.59	12	\$885
1.5 - 2	10	115/208-230 V	BC6210-53-1	0.010	4.94	0.81	0.59	12	\$1,045
		208-230/460 V	BC6210-53-2	0.010	4.94	0.81	0.59	12	\$1,045
		575 V	BC6210-53-5	0.010	4.94	0.81	0.59	12	\$1,045
3	15	115/208-230 V	BC6315-53-1	0.014	5.31	1.19	0.87	13	\$1,170
		208-230/460 V	BC6315-53-2	0.014	5.31	1.19	0.87	13	\$1,170
		575 V	BC6315-53-5	0.014	5.31	1.19	0.87	13	\$1,170

Discount Category **81**



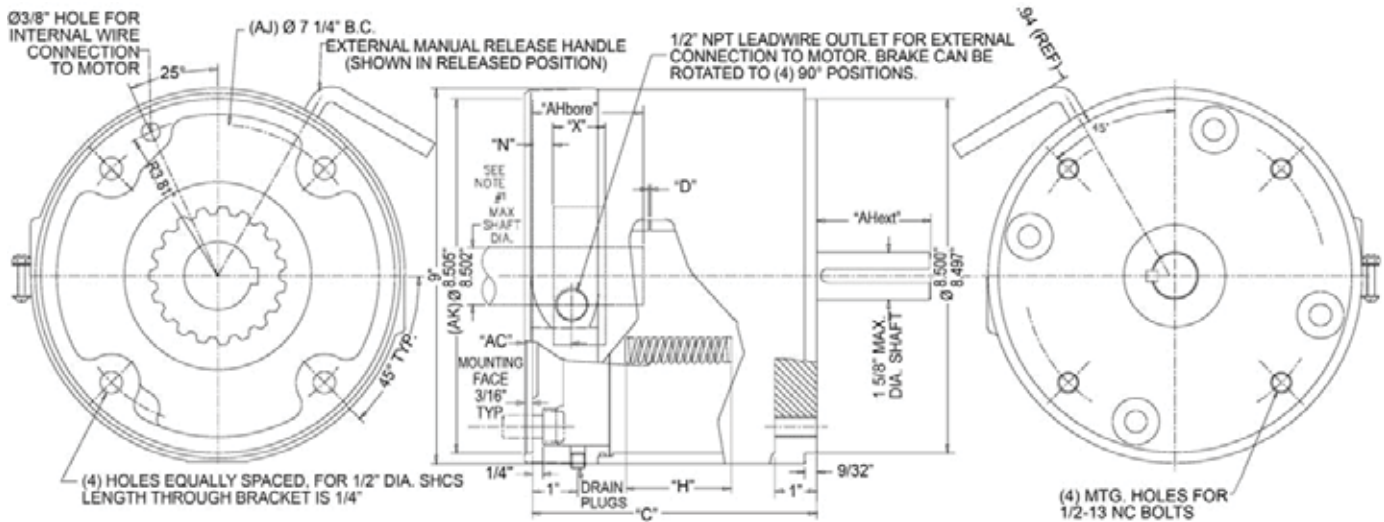
Dings C-Face Coupler Brakes

Witton Kramer Brake
Dings Coupler Brake

70 Series Double C-Face - NEMA Frame Sizes 182TC Through 215TC/UC

Typical Hp	Brake Torque lb-ft	Voltage	Part No.	Inertia Wk2 lb-ft ²	Dimensions in inches					AH bore Max Motor Shaft Length			AH ext Brake Shaft Extension Length			List Price
					C	H	X	N	AC	1.125 Dia	1.375 Dia	1.625 Dia	1.125 Dia.	1.375 Dia	1.625 Dia	
1.5 - 2	10	208-230/460 V	BC7110-CE-2	0.055	7.53	2.59	1.00	0.13	1.13	2.66	3.16	N/A	2.63	3.13	3.75	\$3,695
		575 V	BC7110-CE-5	0.055	7.53	2.59	1.00	0.13	1.13	2.66	3.16	N/A	2.63	3.13	3.75	\$3,695
3	15	208-230/460 V	BC7115-CE-2	0.055	7.53	2.41	1.00	0.13	1.13	2.66	3.16	N/A	2.63	3.13	3.75	\$3,760
		575 V	BC7115-CE-5	0.055	7.53	2.41	1.00	0.13	1.13	2.66	3.16	N/A	2.63	3.13	3.75	\$3,760
5	25	208-230/460 V	BC7225-CE-2	0.076	7.53	2.50	1.00	0.13	1.13	2.66	3.16	N/A	2.63	3.13	3.75	\$3,930
		575 V	BC7225-CE-5	0.076	7.53	2.50	1.00	0.13	1.13	2.66	3.16	N/A	2.63	3.13	3.75	\$3,930
8	35	208-230/460 V	BC7235-CE-2	0.076	7.53	2.34	1.00	0.13	1.13	2.66	3.16	N/A	2.63	3.13	3.75	\$4,120
		575 V	BC7235-CE-5	0.076	7.53	2.34	1.00	0.13	1.13	2.66	3.16	N/A	2.63	3.13	3.75	\$4,120
10	50	208-230/460 V	BC7250-CE-2	0.076	7.53	2.34	1.00	0.13	1.13	2.66	3.16	N/A	2.63	3.13	3.75	\$4,310
		575 V	BC7250-CE-5	0.076	7.53	2.34	1.00	0.13	1.13	2.66	3.16	N/A	2.63	3.13	3.75	\$4,310
15	75	208-230/460 V	BC7475-CE-2	0.145	8.66	2.28	2.38	0.50	2.25	3.81	3.81	3.81	2.63	3.13	3.75	\$4,290
		575 V	BC7475-CE-5	0.145	8.66	2.28	2.38	0.50	2.25	3.81	3.81	3.81	2.63	3.13	3.75	\$4,290
20 - 25	105	208-230/460 V	BC74105-CE-2	0.145	8.66	2.31	2.38	0.50	2.25	3.81	3.81	3.81	2.63	3.13	3.75	\$4,425
		575 V	BC74105-CE-5	0.145	8.66	2.31	2.38	0.50	2.25	3.81	3.81	3.81	2.63	3.13	3.75	\$4,425

Discount Category **81**



W-Series C-Face (B14) & D-Flange (B5) Kits

W Premium NEMA Flanges				
Frame	C Face	List	D Flange	List
	Stock Number		Stock Number	
56	27WL0002	\$40	-	\$40
143/5T	27WL0007	\$45	27WL0008	\$45
182T	27265214	\$65	27265157	\$65
182TCH	27265235	\$65	-	-
184T 2 POLE	27265214	\$65	27265157	\$65
184T 4 POLE	27WL0018	\$65	27WL0019	\$65
184TCH 2 POLE	27265235	\$65	-	-
184TCH 4 POLE	27WL0017	\$65	-	-
213/5T	27325257	\$100	27325175	\$100
254/6T	27415091	\$140	27415244	\$140
284/6T	27475142	\$220	27475150	\$220
324/6T	W1LWF/NM	\$260	W2FWD/NM	\$260
364/5T	W2FWF/NM	\$390	W2LWD/NM	\$390
404/5T	W3FWF/NM	\$620	W3LWD/NM	\$620
444/5T	W4FWF/NM	\$1,140	W3LWD/NM	\$1,140

W Premium Metric Flanges				
Frame	B14 - C Face	List	B5 - D Flange	List
	Stock Number		Stock Number	
63	27155031	\$40	27155067	\$40
71	27185110	\$40	27185084	\$40
80	27WL0004	\$45	27WL0005	\$45
90	27WL0010	\$50	27WL0011	\$50
100	27265049	\$70	27265023	\$70
112 2 POLE	27265049	\$70	27265023	\$70
112 4 POLE	27WL0020	\$70	27WL0021	\$70
132	27325064	\$125	27325034	\$125
160	27415102	\$225	27415019	\$225
180	-	-	27475024	\$320
200	-	-	W1RWD/SM	\$475
225S	-	-	W2FWD/SM	\$655
225M	-	-	W2LWD/SM	\$655
250S	-	-	W3FWD/SM	\$925
250M	-	-	W3LWD/SM	\$925
280S	-	-	W3LWD/SM	\$925
280M	-	-	W3LWD/SM	\$925
315S	-	-	W5FWD/SM	\$2,620
315L	-	-	W5LWD/SM	\$2,620

Note: Flange part numbers are for current models only.
Contact our office with the motor's serial number for other models.
Note: Discount codes are same as motor on pricing pages.

Mounting Accessories

The following are the most commonly used methods of mounting electric motors.

SLIDE RAILS									
FRAME	143/5T	182/4T	213/5T	254/6T	284/6T	324/6T	364/5T	404/5T	444/5T
STOCK No.	2800001	2800003	2800005	2800007	2800009	2800011	2800013	2800015	2800017
LIST	\$41	\$67	\$67	\$116	\$116	\$232	\$232	\$373	\$373

SLIDE BASES (Double adjustment screw type)											
FRAME	56	143T	145T	182T	184T	213T	215T	254T	256T	284T	286T
STOCK No.	5800000	5800001	5800002	5800003	5800004	5800005	5800006	5800007	5800008	5800009	5800010
LIST	\$58	\$58	\$58	\$71	\$71	\$91	\$91	\$104	\$104	\$112	\$112

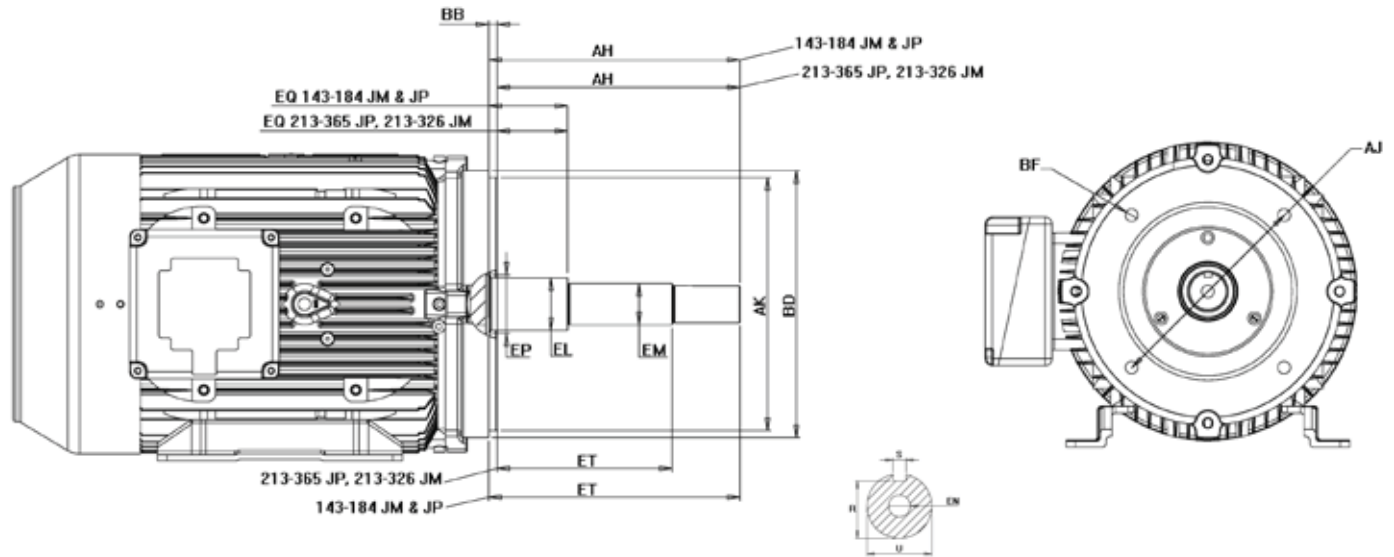
FRAME	324T	326T	364T	365T	404T	405T	444T	445T	447T	504	505
STOCK No.	5800011	5800012	5800013	5800014	5800015	5800016	5800017	5800018	5800019	5800020	5800021
LIST	\$140	\$140	\$171	\$171	\$272	\$272	\$341	\$341	\$356	\$694	\$694

TRANSITION BASES			
RERATED FRAME SIZE	FORMER FRAME	STOCK No	LIST
143T, 145T	182,184	1814T	\$38
182T, 184T	213, 215	2118T	\$49
213T, 215T	254U, 256U	25U21T	\$55
254T,256T	284U, 286U	28U25T	\$60
284T, 286T	324U, 326U	32U28T	\$95
284TS, 286TS	326S	32S28TS	\$207
324T, 326T	364U, 365U	36U32T	\$109
364TS, 365TS	404U, 405U	40U36T	\$120
364TS, 365TS	404US, 405US	40US36TS	\$362
364T, 365T	444US, 445US	44US36TS	\$362
404T, 405T	444U, 445U	44U40T	\$152
404TS, 405TS	444US,445US	44US40TS	\$420

STOCK MODIFICATIONS FOR TEFC MOTORS

FRAME - NEMA	56	143/5	182/4	213/5	254/6	284/6	324/6	364/5	404/5	444/5	504/5
FRAME - METRIC	63/80	90	100/112	132	160	180	200	225	250	280	315
TEFC MODIFICATIONS											
SHAFTS											
MODIFIED (2)	\$180	\$216	\$255	\$315	\$450	\$536	\$646	\$880	\$1,077	\$1,545	\$1,915
SINGLE ENDED (1)	\$607	\$681	\$779	\$932	\$1,175	\$1,550	\$2,028	\$2,815	\$3,690	\$5,218	\$6,068
DOUBLE ENDED (1)	\$910	\$1,022	\$1,169	\$1,398	\$1,763	\$2,325	\$2,535	\$3,518	\$4,613	\$6,524	\$7,585
BLANKING PLATE WITH TAPPED HOLE	\$266	\$266	\$336	\$414	\$486	\$557	PRICING ON REQUEST				
EXTENDED LEADS UP TO 3'	\$235	\$235	\$245	\$295	\$355	\$450	\$570	\$685	\$980	\$1,215	\$1,450
SEALED BEARINGS	\$50	\$70	\$100	\$205	\$265	\$450	\$560	\$780	PRICING ON REQUEST		
BALL BEARING TO ROLLER					\$530	\$900	\$1,210	\$1,560	\$1,750	\$2,025	\$2,300
EPOXY SPRAY/DIP & BAKE	\$250	\$250	\$320	\$470	\$500	\$525	\$700	\$840	\$1,290	\$1,600	\$2,100
NAMEPLATES	\$110	\$110	\$110	\$110	\$110	\$110	\$110	\$110	\$110	\$110	\$110
TERMINAL BOARDS	\$100	\$100	\$150	\$150	\$200	\$200	\$320	\$320	\$470	\$470	\$470
CORROSION RESISTANT (3)	\$355	\$420	\$480	\$700	\$805	\$995	\$1,295	PRICING ON REQUEST			
TROPIC PROOF (4)	\$225	\$250	\$265	\$390	\$410	\$430	\$560	\$665	\$1,035	\$1,265	\$1,430
WEATHERPROOF IP56 (5)	\$306	\$367	\$429	\$651	\$753	\$944	\$1,241	PRICING ON REQUEST			
THERMISTORS/KLIXONS (6)	\$435	\$435	\$435	\$475	\$505	\$545	\$885	\$985	\$1,160	\$1,335	\$1,540
HEATERS 110 OR 220 VOLTS		\$490	\$490	\$680	\$820	\$820	\$885	\$950	\$980	\$1,105	\$1,275
DRIP COVERS	\$150	\$150	\$175	\$270	\$340	\$460	\$520	\$575	PRICING ON REQUEST		
AEGIS GROUNDING RING	\$420	\$450	\$470	\$540	\$645	\$690	\$730	\$840	\$1,128	\$1,260	\$1,310
ENCODERS	PRICING ON REQUEST										
SHAFT GROUNDING RING	PRICING ON REQUEST										
FORCED VENT BLOWERS	PRICING ON REQUEST										
FEET IN PAIRS	\$75	\$86	\$106	\$157	\$218	\$294	\$376	\$527	\$601	\$903	
CUSTOM PAINT	PRICING ON REQUEST										

NEMA JM/JP TEFC Dimensions Frame Sizes 143-364



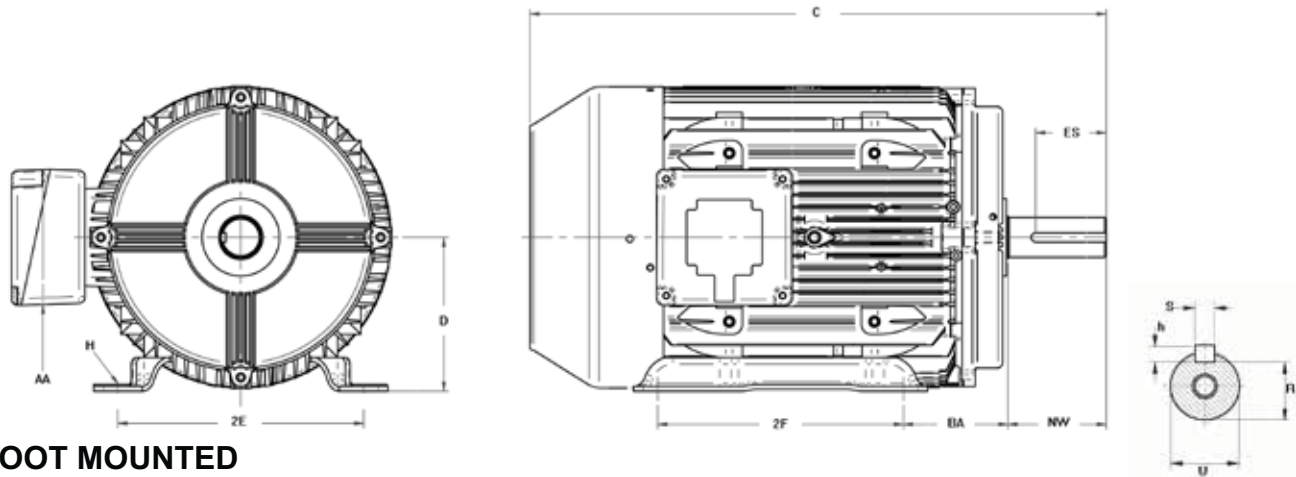
JM Dimensions

Frame	U	AH	AJ	AK	BB	BD Max.	BF			EL	EM	EN				EQ	ER Min.	Keyseat			ET
							No.	Tap Size	Bolt Pen. Allow.			Tap Size	Tap Drill Depth Max.	Bolt Pen. Allow.	EP Min.			R	ES Min.	S	
143JM & 145JM	0.8745	4.281	5.875	4.500	0.156	6.62	4	3/8-16	0.56	1.156	1.0000	3/8-16	1.12	0.75	1.156	0.640	4.25	0.771-	1.65	0.190-	2.890
	0.8740	4.219		4.497	0.125					1.154	0.9995					0.610		0.756		0.188	
182JM & 184JM	0.8745	4.281	5.875	4.500	0.156	6.62	4	3/8-16	0.56	1.250	1.0000	3/8-16	1.12	0.75	1.250	0.640	4.25	0.771-	1.65	0.190-	2.890
	0.8740	4.219		4.497	0.125					1.248	0.9995					0.610		0.756		0.188	
213JM & 215JM	0.8745	4.281	7.250	8.500	0.312	9.00	4	1/2-13	0.75	1.250	1.0000	3/8-16	1.12	0.75	1.750	0.640	4.25	0.771-	1.65	0.190-	2.890
	0.8740	4.219		8.497	0.250					1.248	0.9995					0.610		0.756		0.188	
254JM & 256JM	1.2495	5.281	7.250	8.500	0.312	10.00	4	1/2-13	0.75	1.750	1.375	1/2-13	1.50	1.00	1.750	0.640	5.25	1.112-	2.53	0.252-	3.015
	1.2490	5.219		8.497	0.250					1.748	1.345					0.610		1.097		0.250	
284JM & 286JM	1.2495	5.281	11.00	12.500	0.312	14.00	4	5/8-11	0.94	1.750	1.375	1/2-13	1.50	1.00	2.125	0.645	5.25	1.112-	2.53	0.252-	3.020
	1.2490	5.219		12.495	0.250					1.748	1.345					0.605		1.097		0.250	
324JM & 326JM	1.2495	5.281	11.00	12.500	0.312	14.00	4	5/8-11	0.94	1.750	1.375	1/2-13	1.50	1.00	2.125	0.645	5.25	1.112-	2.53	0.252-	3.020
	1.2490	5.219		12.495	0.250					1.748	1.345					0.605		1.097		0.250	
364JM & 365JM	1.2495	5.281	11.00	12.500	0.312	14.00	4	5/8-11	0.94	1.750	1.375	1/2-13	1.50	1.00	2.125	0.645	5.25	1.112-	2.53	0.252-	3.020
	1.2490	5.219		12.495	0.250					1.748	1.345					0.605		1.097		0.250	

JP Dimensions

Frame	U	AH	AJ	AK	BB	BD Max.	BF			EL	EM	EN				EQ	ER Min.	Keyseat			ET
							No.	Tap Size	Bolt Pen. Allow.			Tap Size	Tap Drill Depth Max.	Bolt Pen. Allow.	EP Min.			R	ES Min.	S	
143JP & 145JP	0.8745	7.343	5.875	4.500	0.156	6.62	4	3/8-16	0.56	1.156	1.0000	3/8-16	1.12	0.75	1.156	1.578	7.312	0.771-	1.65	0.190-	5.952
	0.8740	7.281		4.497	0.125					1.154	0.9995					1.548		0.756		0.188	
182JP & 184JP	0.8745	7.343	5.875	4.500	0.156	6.62	4	3/8-16	0.56	1.250	1.0000	3/8-16	1.12	0.75	1.250	1.578	7.312	0.771-	1.65	0.190-	5.952
	0.8740	7.281		4.497	0.125					1.248	0.9995					1.548		0.756		0.188	
213JP & 215JP	0.8745	8.156	7.250	8.500	0.312	9.00	4	1/2-13	0.75	1.750	1.3750	1/2-13	1.50	1.00	1.750	2.390	8.125	1.112-	2.53	0.252-	5.890
	0.8740	8.094		8.497	0.250					1.748	1.3745					2.360		1.097		0.250	
254JP & 256JP	1.2495	8.156	7.250	8.500	0.312	10.00	4	1/2-13	0.75	1.750	1.3750	1/2-13	1.50	1.00	1.750	2.390	8.125	1.112-	2.53	0.252-	5.890
	1.2490	8.094		8.497	0.250					1.748	1.3745					2.360		1.097		0.250	
284JP & 286JP	1.2495	8.156	11.00	12.500	0.312	14.00	4	5/8-11	0.94	1.750	1.3750	1/2-13	1.50	1.00	2.125	2.390	8.125	1.112-	2.53	0.252-	5.895
	1.2490	8.094		12.495	0.250					1.748	1.3745					2.360		1.097		0.250	
324JP & 326JP	1.2495	8.156	11.00	12.500	0.312	14.00	4	5/8-11	0.94	1.750	1.3750	1/2-13	1.50	1.00	2.125	2.395	8.125	1.112-	2.53	0.252-	5.895
	1.2490	8.094		12.495	0.250					1.748	1.3745					2.355		1.097		0.250	
364JP & 365JP	1.2495	8.156	11.00	12.500	0.312	14.00	4	5/8-11	0.94	2.125	1.7500	1/2-13	1.50	1.00	2.500	2.395	8.125	1.416-	2.53	0.377-	5.895
	1.2490	8.094		12.495	0.250					2.123	1.7495					2.355		0.375		5.855	

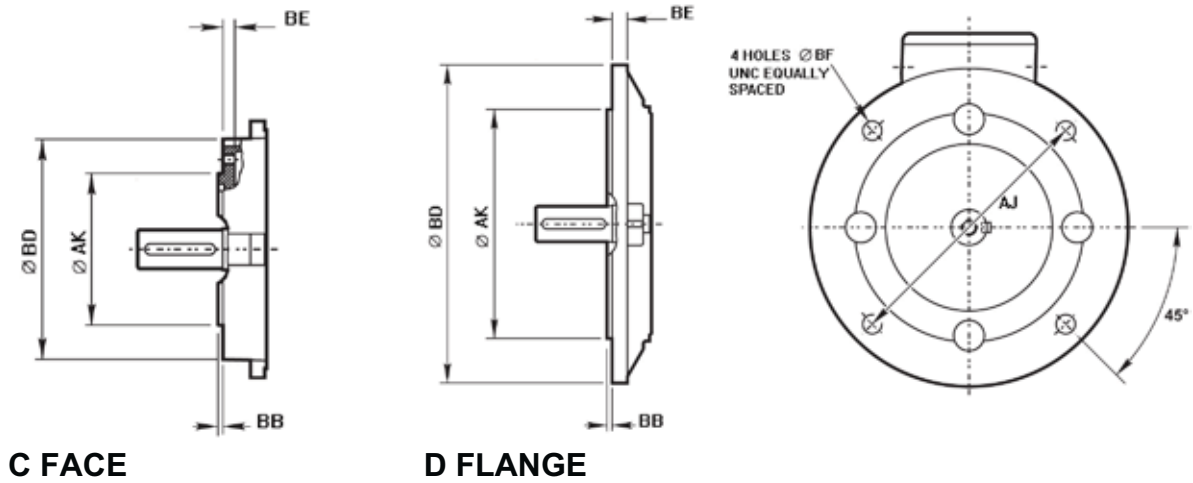
*For standard NEMA foot dimensions see page 96



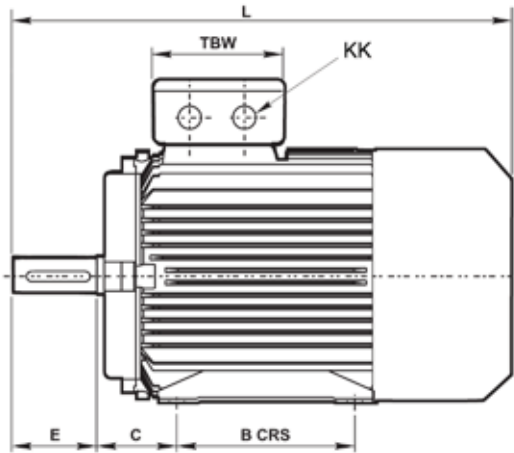
FOOT MOUNTED

Frame Size	FOOT INSTALLATION DIM.				SHAFT INSTALLATION DIM.						GENERAL DIM.	
	2E	2F	H	BA	N-W	U	S	AH	R	ES	D	AA
56	4.87	3.0	0.34	2.75	1.875	0.625	0.187	2.062	0.517	1.37	3.50	0.50
143T	5.5	4.0	0.34	2.25	2.25	0.875	0.187	2.125	0.771	1.37	3.50	0.75
145T		5.0	0.34	2.25	2.25	0.875	0.187	2.125	0.771	1.37	3.50	0.75
182T	7.5	4.5	0.50	2.75	2.75	1.125	0.25	2.625	0.986	1.88	4.50	0.75
184T		5.5	0.50	2.75	2.75	1.125	0.25	2.625	0.986	1.88	4.50	0.75
213T	8.5	5.5	0.50	3.50	3.375	1.375	0.312	3.125	1.201	2.38	5.25	1.00
215T		7.0	0.50	3.50	3.375	1.375	0.312	3.125	1.201	2.38	5.25	1.00
254T	10	8.25	0.59	4.25	4.00	1.625	0.375	3.75	1.416	2.87	6.25	1.25
256T		10	0.59	4.25	4.00	1.625	0.375	3.75	1.416	2.87	6.25	1.25
284T	11	9.5	0.59	4.75	4.625	1.875	0.50	4.375	1.591	3.25	7.00	1.50
284TS		9.5	0.59	4.75	3.25	1.625	0.375	3.00	1.416	1.87	7.00	1.50
286T	11	11	0.59	4.75	4.625	1.875	0.50	4.375	1.591	3.25	7.00	1.50
286TS		11	0.59	4.75	3.25	1.625	0.375	3.00	1.416	1.87	7.00	1.50
324T	12.5	10.50	0.63	5.25	5.25	2.13	0.50	5.00	1.845	4.75	8.00	2.00
324TS		10.50	0.63	5.25	3.75	1.88	0.50	3.50	1.591	3.25	8.00	2.00
326T	12.5	12	0.63	5.25	5.25	2.13	0.50	5.00	1.845	4.75	8.00	2.00
326TS		12	0.63	5.25	3.75	1.88	0.50	3.50	1.591	3.25	8.00	2.00
364T	14	11.25	0.63	5.88	5.88	2.38	0.63	5.38	2.021	5.00	9.00	3.00
364TS		11.25	0.63	5.88	3.75	1.88	0.50	3.50	1.591	3.25	9.00	3.00
365T	14	12.25	0.63	5.88	5.88	2.38	0.63	5.38	2.021	5.00	9.00	3.00
365TS		12.25	0.63	5.88	3.75	1.88	0.50	3.50	1.591	3.25	9.00	3.00
404T	16	12.25	0.75	6.63	7.25	2.88	0.75	7.25	2.450	6.50	10.00	3.00
404TS		12.25	0.75	6.63	4.25	2.13	0.50	4.00	1.845	3.25	10.00	3.00
405T	16	13.75	0.75	6.63	7.25	2.88	0.75	7.25	2.450	6.50	10.00	3.00
405TS		13.75	0.75	6.63	4.25	2.13	0.50	4.00	1.845	3.25	10.00	3.00
444T	18	14.50	0.75	7.50	8.50	3.38	0.88	8.25	2.880	7.00	11.00	3.00
444TS		14.50	0.75	7.50	4.75	2.38	0.63	4.50	2.021	4.13	11.00	3.00
445T	18	16.50	0.75	7.50	8.50	3.38	0.88	8.25	2.880	7.00	11.00	3.00
445TS		16.50	0.75	7.50	4.75	2.38	0.63	4.50	2.021	4.13	11.00	3.00
447T	18	20	0.75	7.50	8.50	3.38	0.88	8.25	2.880	7.00	11.00	3.00
447TS		20	0.75	7.50	4.75	2.38	0.63	4.50	2.021	4.13	11.00	3.00
504Z	20	16	1.00	8.50	9.25	3.63	0.88	9.00	3.134	8.50	12.50	3.00
504SZ		16	1.00	8.50	5.50	2.75	0.63	5.25	2.402	4.88	12.50	3.00
505Z	20	18	1.00	8.50	9.25	3.63	0.88	9.00	3.134	8.50	12.50	3.00
505SZ		18	1.00	8.50	5.50	2.75	0.63	5.25	2.402	4.88	12.50	3.00
585Z	24	20	1.00	10.00	10.00	3.88	1.00	10.00	3.309	9.75	14.50	3.00
585SZ		20	1.00	10.00	7.75	3.00	0.75	7.75	2.569	7.75	14.50	3.00
586Z	24	22	1.00	10.00	10.00	3.88	1.00	10.00	3.309	9.75	14.50	3.00
586SZ		22	1.00	10.00	7.75	3.00	0.75	7.75	2.569	7.75	14.50	3.00

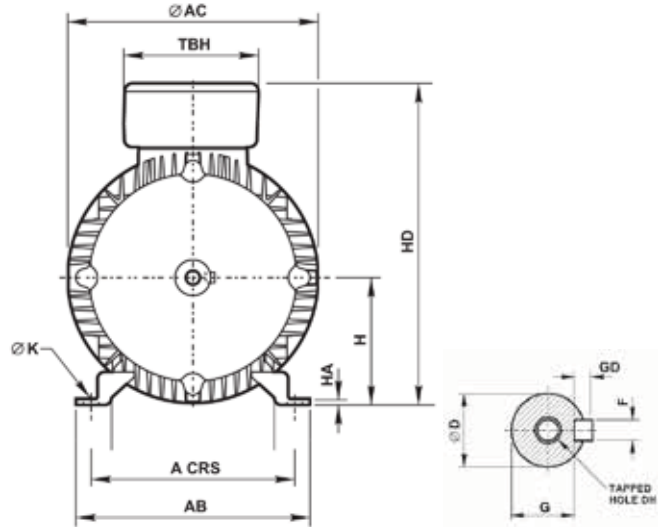
NEMA TEFC Dimensions Frame Sizes 56 - 586



Frame Size	D FLANGE DIMENSIONS					C FACE DIMENSIONS				
	AJ	AK	BB	BD	BF	AJ	AK	BB	BD	BF
56	-	-	-	-	-	5.87	4.5	0.12	6.5	0.37
143T	10	9	0.25	11	0.53	5.87	4.5	0.12	6.5	0.37
145T										
182T	10	9	0.25	11	0.53	7.25	8.5	0.16	9	0.50
184T								0.25	6.5	
182TCH	-	-	-	-	-	5.88	4.5	0.16	6.5	0.38
184TCH								0.25		
213T	10	9	0.25	11	0.53	7.25	8.5	0.25	9	0.50
215T										
254T	12.50	11	0.25	14	0.81	7.25	8.5	0.25	9.84	0.50
256T										
284T	12.50	11	0.25	14	0.81	9	10.5	0.25	11.25	0.50
286T										
284TS	12.50	11	0.25	14	0.81	9	10.5	0.25	11.25	0.50
286TS										
324T	16	14	0.25	17.75	0.81	11	12.50	0.25	13	0.63
326T										
324TS	16	14	0.25	17.75	0.81	11	12.50	0.25	13	0.63
326TS										
364T	16	14	0.25	17.75	0.81	11	12.50	0.25	13.75	0.63
365T										
364TS	16	14	0.25	17.75	0.81	11	12.50	0.25	13.75	0.63
365TS										
404T	20	18	0.25	21.63	0.81	11	12.50	0.25	14.50	0.63
405T										
404TS	20	18	0.25	21.63	0.81	11	12.50	0.25	14.50	0.63
405TS										
444T	20	18	0.25	21.63	0.81	14	16	0.25	17.50	0.63
445T										
444TS	20	18	0.25	21.63	0.81	14	16	0.25	17.50	0.63
445TS										
447T	20	18	0.25	21.63	0.81	14	16	0.25	17.50	0.63
449T										
447TS	20	18	0.25	21.63	0.81	14	16	0.25	17.50	0.63
449TS										
504SZ	22	18	0.25	25	0.94	14.50	16.50	0.25	17.50	0.63
504Z										
505SZ	22	18	0.25	25	0.94	14.50	16.50	0.25	17.50	0.63
505Z										
585SZ	29.13	26.77	0.25	31.50	0.94	-	-	-	-	-
585Z										
586SZ	29.13	26.77	0.25	31.50	0.94	-	-	-	-	-
586Z										



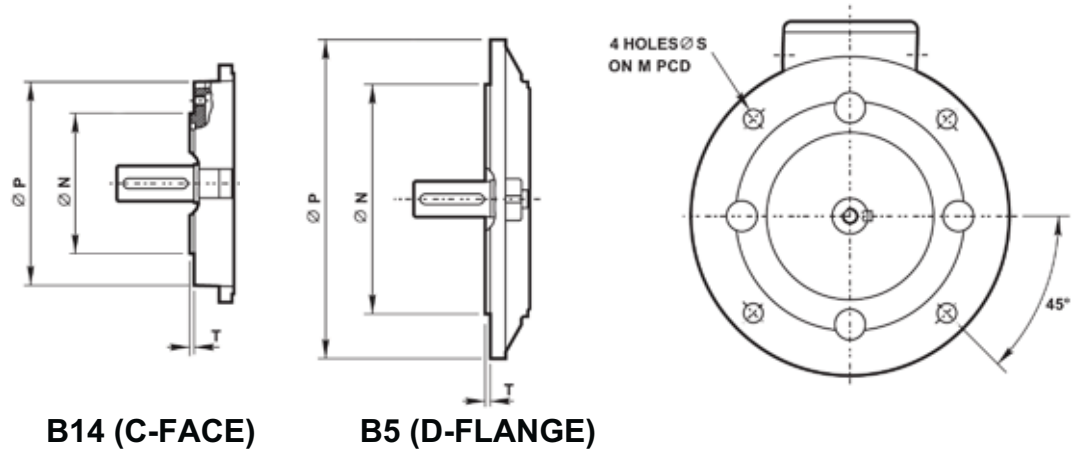
B3 (FOOT MOUNTED)



Frame Size	FOOT MOUNTING				SHAFT					GENERAL						
	H	A	B	C	D	E	F	G	K	AB	HD	AC	TBW	TBH	KK	
63	63	100	80	40	11	23	4	8.5	7	119	163	126	86	86	1 X CM20	
71	71	112	90	45	14	30	5	11	7	131	163	140	86	86	1 X CM20	
80M	80	125	100	50	19	40	6	15.5	10	157	212	157	86	86	1 X CM20	
90S	90	140	100	56	24	50	8	20	10	164	225	178	86	86	1 X CM20	
90L	90	140	125	56	24	50	8	20	10	164	225	178	86	86	1 X CM20	
100L	100	160	140	63	28	60	8	24	12	164	267	178	127	127	2 X CM20	
112M	112	190	140	70	28	60	8	24	12	218	279	215	127	127	2 X CM25	
132S	132	216	140	89	38	80	10	33	12	242	332	255	127	127	2 X CM25	
132M	132	216	178	89	38	80	10	33	12	242	332	255	127	127	2 X CM25	
160M	160	254	210	108	42	110	12	37	15	304	400	312	140	140	2 X CM32	
160L	160	254	254	108	42	110	12	37	15	304	400	312	140	140	2 X CM32	
180M	180	279	241	121	48	110	14	42.5	15	329	400	354	140	140	2 X CM32	
180L	180	279	279	121	48	110	14	42.5	15	329	400	354	140	140	2 X CM32	
200L	200	318	305	133	55	110	16	49	19	386	525	410	220	161	-	
225S	2	225	356	286	149	55	110	16	49	M16	426	550	410	220	161	-
	4,8					60	140	18	53							
225M	2	225	356	311	149	55	110	16	49	M16	426	570	448	220	161	-
	4,6,8					60	140	18	53							
250M	2	250	406	349	168	60	140	18	53	M20	482	595	448	220	161	-
	4,6,8					65	140	18	58							
280S	2	280	457	368	190	65	140	18	58	M20	540	655	508	220	161	-
	4,6,8					75	140	20	67.5							
280M	2	280	457	419	190	65	140	18	58	M20	540	655	508	220	161	-
	4,6,8					75	140	20	67.5							
315S	2	315	508	406	216	65	170	18	58	M24	597	845	563	330	326	-
	4,6,8					80	170	20	71							
315M	2	315	508	457	216	65	170	18	58	M24	597	845	563	330	326	-
	4,6,8					80	170	20	71							
315L	2	315	508	508	216	65	170	18	58	M24	597	875	640	330	326	-
	4,6,8					80	170	20	71							

IEC Euronorm TEFC Dimensions

TEFC Dimensions Frame Sizes 63 - 315



Frame Size	D FLANGE (B5)					C FACE (B14)				
	N	M	P	S	T	N	M	P	S	T
63	95	115	140	10	3	60	75	90	M5	2.5
71	110	130	160	10	3.5	70	85	105	M6	2.5
80M	130	165	200	12	3.5	80	100	120	M6	3.0
90S	130	165	200	12	3.5	95	115	140	M8	3.0
90L	130	165	200	12	3.5	95	115	140	M8	3.0
100L	180	215	250	14.5	4	110	130	160	M8	3.5
112M	180	215	250	14.5	4	110	130	160	M8	3.5
132S	230	265	300	14.5	4	130	165	200	M10	3.5
132M	230	265	300	14.5	4	130	165	200	M10	3.5
160M	250	300	350	18.5	5	180	215	250	M12	4.0
160L	250	300	350	18.5	5	180	215	250	M12	4.0
180M	250	300	350	18.5	5	-	-	-	-	-
180L	250	300	350	18.5	5	-	-	-	-	-
200L	300	350	400	19	5	-	-	-	-	-
225S	350	400	450	19	5	-	-	-	-	-
225M	350	400	450	19	5	-	-	-	-	-
250M	450	500	550	19	5	-	-	-	-	-
280S	450	500	550	19	5	-	-	-	-	-
280M	450	500	550	19	5	-	-	-	-	-
315S	450	500	550	19	5	-	-	-	-	-
315M	550	600	650	24	6	-	-	-	-	-
315L	550	600	650	24	6	-	-	-	-	-

**Definition
IP (Ingress Protection)
IEC Metric Motors**



Protection Against Solid Objects			Protection Against Liquids		
#	Brief Description*	Definitions	#	Brief Description*	Definitions
0	Non-protected machines	No special protection	0	Non-protected machines	No special protection
1	Machine protected against solid objects greater than 50 mm**	Accidental or inadvertent contact with or approach to live and moving parts inside the enclosure by a large surface of the human body, such as a hand (but no protection against deliberate access). Ingress of solid objects exceeding 50 mm in diameter	1	Machine protected against dripping water	Dripping water (vertically falling drops) shall have no harmful effect.
2	Machine protected against solid objects greater than 12 mm**	Contact by fingers or similar objects not exceeding 80 mm in length with or approach to live or moving parts inside the enclosure. Ingress of solid objects exceeding 12 mm in diameter.	2	Machine protected against dripping water when tilted up to 15°	Vertically dripping water shall have no harmful effect when the machine is tilted in any angle up to 15° from its normal position
3	Machine protected against solid objects greater than 2.5 mm**	Contact with or approach to live or moving parts inside the enclosure by tools or wires exceeding 2.5 mm in diameter. Ingress of solid objects exceeding 1 mm in diameter.	3	Machine protected against spraying water	Vertically dripping water shall have no harmful effect when the machine is tilted in any angle up to 15° from its normal position
4	Machine protected against solid objects greater than 1mm**	Contact with or approach to live or moving parts inside the enclosure by wires or strips of thickness greater than 1 mm in diameter.	4	Machine protected against splashing water	Water falling as a spray at any angle up to 60° from the vertical shall have no harmful effect
5	Dust-protected machine†	Contact with or approach to live or moving parts inside the enclosure. Ingress of dust is not totally prevented but dust does not enter insufficient quantity to interfere with satisfactory operation of the machine.	5	Machine protected against water jets	Water projected by a nozzle against the machine from any direction shall have no harmful effect.
6	Dust-tight machine†	Contact with or approach to live or moving parts inside the enclosure. No ingress of dust	6	Machine protected against heavy seas	Water from heavy seas or water projected in powerful jets shall not enter the machine in harmful quantities.

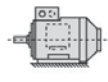
* The brief description given in column 2 on this table should not be used to specify the form of protection.

** Machines assigned a first characteristic number 1,2,3 or 4 will exclude both regularly or irregularly shaped solid objects proved that three normally per pendicular dimensions of the object exceed the appropriate figure in column "Definition".

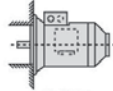
† The degree of protection against dust defined by this standard is a general one. When the nature (dimensions of particles, their nature, for instance fibrous particles) is specified, test conditions should be determined by an agreement between manufacturer and user.

IEC Mounting Codes

Horizontal shaft:



IM B3
IM 1001
foot mounted



IM B5
IM 3001
flange at DE
no feet



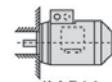
IM B6
IM 1051
foot wall mounted with
feet on left-hand side
when viewed from DE



IM B7
IM 1061
foot wall mounted with
feet on right-hand side
when viewed from DE

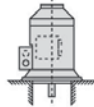


IM B8
IM 1071
ceiling mounted
with feet
above motor

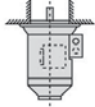


IM B14
IM 3601
face at DE
no feet

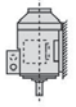
Vertical shaft:



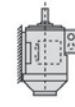
IM V1
IM 3011
flange at DE
shaft down
no feet



IM V3
IM 3031
flange at DE
shaft up
no feet



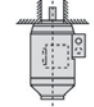
IM V5
IM 1011
vertical foot
wall mounted
shaft down



IM V6
IM 1031
vertical foot
wall mounted
shaft up



IM V18
IM 3611
face at DE
shaft down
no feet



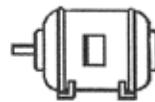
IM V19
IM 3631
face at DE
shaft up
no feet

NEMA Mounting Codes

FLOOR MOUNTINGS



ASSEMBLY F-1



ASSEMBLY F-2

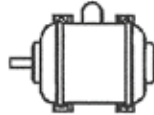


ASSEMBLY F-3

WALL MOUNTINGS



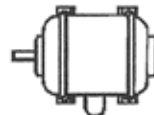
ASSEMBLY W-1



ASSEMBLY W-2



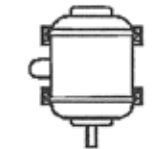
ASSEMBLY W-3



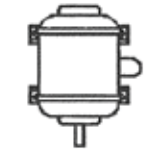
ASSEMBLY W-4



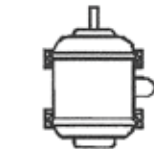
ASSEMBLY W-5



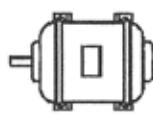
ASSEMBLY W-6



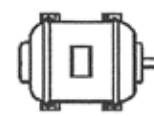
ASSEMBLY W-7



ASSEMBLY W-8



ASSEMBLY W-9



ASSEMBLY W-10



ASSEMBLY W-11

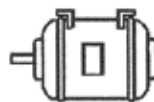


ASSEMBLY W-12

CEILING MOUNTINGS



ASSEMBLY C-1



ASSEMBLY C-2



ASSEMBLY C-3