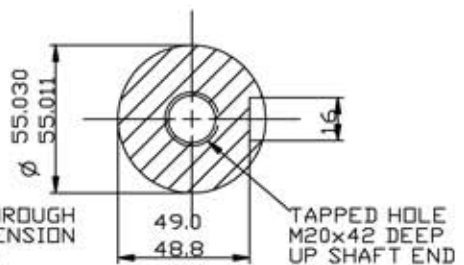


CUSTOMER		
ORDER No.		
SERIAL No.		
FRAME SIZE		
KW	R.P.M.	
Hz	PHASE 3	
VOLTS	POLES	
BRGS.	D.E	N.D.E
MOTOR NETT. WT.		Kg.
INSULATION CLASS		
TEMPERATURE RISE °C		
DESIGN AMBIENT TEMPERATURE °C		
HEATER WATTS & VOLTS (IF FITTED)		
- WATTS, - VOLTS		

REMARKS
 EEx de IIB
 BASEEFA CERTIFICATE
 No. Ex98E1111X
 or
 EEx de IIC
 BASEEFA CERTIFICATE
 No. Ex98E1112X

ALL DIMENSIONS IN MILLIMETRES



NOTE:-
 TERMINAL BOX CAN BE MOUNTED (LEFT OR RIGHT) BY REFITTING FEET AND LIFTING LUGS 90° IN APPROPRIATE DIRECTIONS. CABLE ENTRY CAN BE SUPPLIED IN ANY ONE OF FOUR POSITIONS AT 90° INTERVALS

NOTE!
 2.5 ENDPLAY WILL BE PROVIDED FOR ENDTHRUST PROTECTION WHEN CUSTOMERS NOTIFY US OF THEIR INTENTION TO USE RIGID COUPLINGS AND DRIVEN MACHINES WITHOUT ENDPLAY.

OUTLINE DIMENSIONS OF STANDARD FOOT MOUNTED METRIC A.C. MOTOR TO BS4999 PART 141 T.E.F.V. EEx de TO EN50014/18/19 FRAME W-EF200LN (ALL POLES)

SCALE	1:6	DATE
DRAWN	JML	5/5/97
CHECKED	JML	5/5/97
APPROVED	IJW	5/5/97

DRG. No.	M70009		
REVISION:	A.M.E	DATE	30.4.98