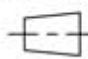

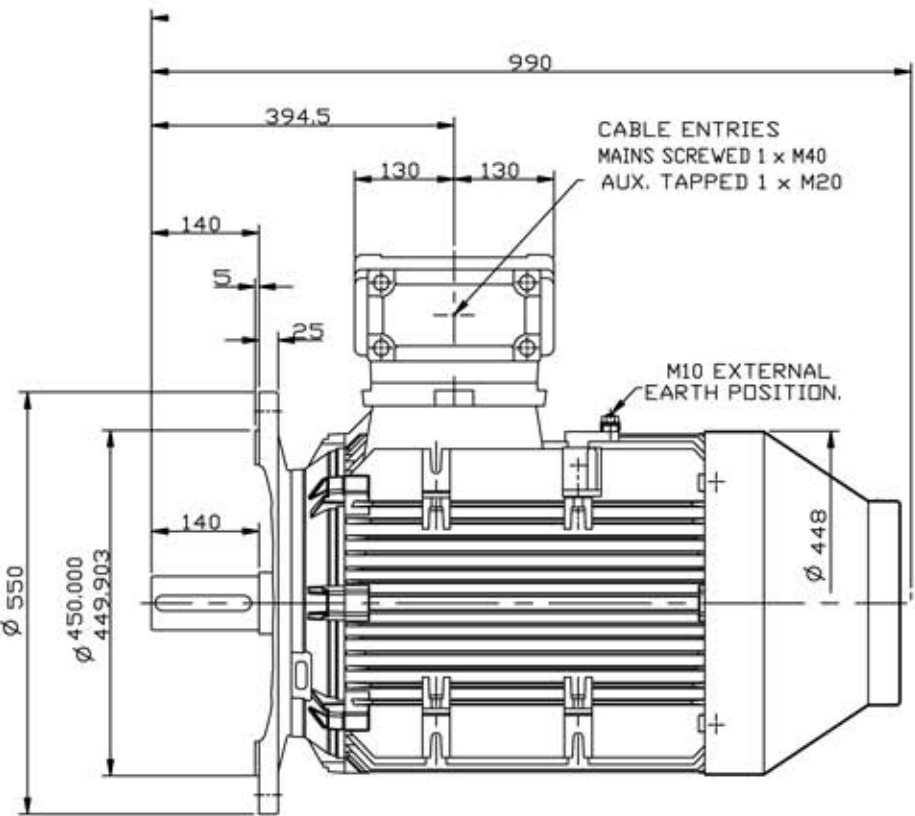


CUSTOMER		
ORDER No.		
SERIAL No.		
FRAME SIZE		
Kw	R.P.M.	
Hz	PHASE 3	
VOLTS	POLES	
BRGS.	D.E	N.D.E
MOTOR NETT. WT.		Kg.
INSULATION CLASS		
TEMPERATURE RISE °C		
DESIGN AMBIENT TEMPERATURE °C		
HEATER WATTS & VOLTS (IF FITTED)		
- WATTS, - VOLTS		

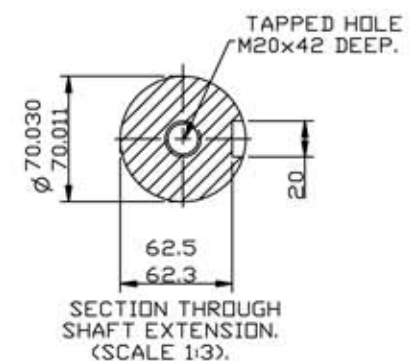
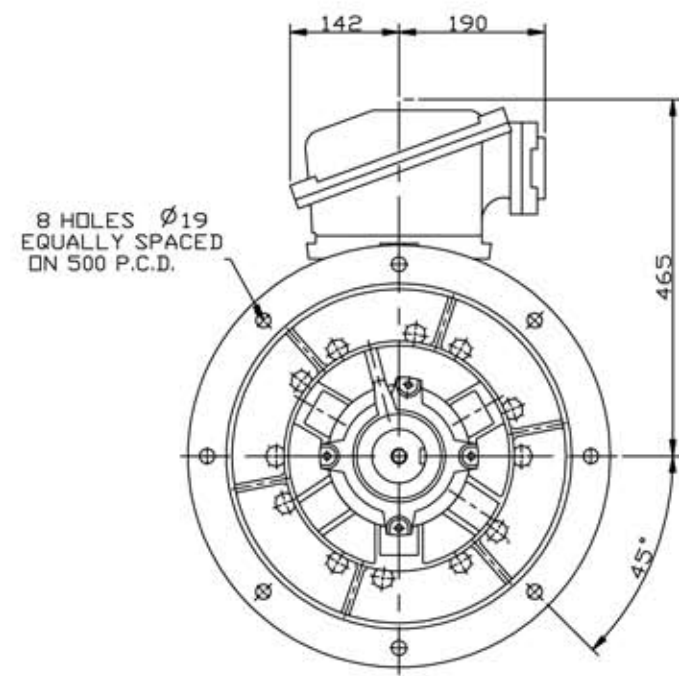
REMARKS
 EEx de IIB
 BASEEFA CERTIFICATE
 No. Ex98E1118X
 or
 EEx de IIC
 BASEEFA CERTIFICATE
 No. Ex98E1119X.

ALL DIMENSIONS IN MILLIMETRES

  FIRST ANGLE PROJECTION



NOTE:-
 CABLE ENTRY CAN BE SUPPLIED IN ANY ONE OF FOUR POSITIONS AT 90 ° INTERVALS.



NOTE1
 STANDARD MACHINES ARE ARRANGED FOR HORIZONTAL OVERHUNG MOUNTING. CUSTOMERS SHOULD NOTIFY US WHEN ORDERING IF VERTICAL MOUNTING IS REQUIRED. IF VERTICAL, THE MOTOR THRUST BEARING MUST NOT BE ALLOWED TO TAKE ANY LOAD OTHER THAN THE WEIGHT OF THE ROTOR WITHOUT OUR APPROVAL.

OUTLINE DIMENSIONS OF STANDARD FLANGE MOUNTED METRIC A.C MOTOR TO BS4999 PART 141. EEx de TO EN50014/18/19. TOTALLY ENCLOSED FAN VENTILATED. FRAME SIZE: W-EF250S-D (4 POLE UP).

SCALE	1/7	DATE
DRAWN	M.E	12.4.99
CHECKED	J.M.L.	12.4.99
APPROVED	J.M.L.	12.4.99

DRG. No.	M70091		
REVISION:	A LM	DATE	9.12.99

NOTE1
 2.5 ENDPLAY WILL BE PROVIDED FOR ENDTHRUST PROTECTION WHEN CUSTOMERS NOTIFY US OF THEIR INTENTION TO USE RIGID COUPLINGS AND DRIVEN MACHINES WITHOUT ENDPLAY.